



continia

Document Output

Developers Guide

November 2023 - CDO 9.0

Table of contents

Introduction	7
Design	8
Print and send emails.....	8
Generating PDFs	8
Data Model	9
Table 6175271 CDO E-Mail Template	10
Table 6175272 CDO E-Mail Recipient	10
Table 6175273 CDO E-Mail Log.....	11
Table 6175274 CDO E-Mail Template Attachment	12
Table 6175275 CDO E-Mail Template MergeField.....	12
Table 6175276 CDO Document Group.....	12
Table 6175277 CDO E-Mail Codeunit Parameter.....	13
Table 6175278 CDO SMTP Setup	13
Table 6175279 CDO Statement Req. Page Setup (Not used)	13
Table 6175280 CDO E-Mail Job.....	14
Table 6175281 CDO Setup.....	14
Table 6175282 CDO Queue Entry	15
Table 6175283 CDO E-Mail Template Header	16
Table 6175284 CDO E-Mail Template Line	17
Table 6175285 CDO Send Customer Statement.....	18
Table 6175286 CDO Customer Setup.....	18
Table 6175287 CDO Statement Journal Line	19
Table 6175288 CDO Object Stub (FOB only).....	19
Table 6175289 CDO E-Mail Templ.Imp.Worksht.L	19
Table 6175290 CDO E-Mail Recipient Template.....	20
Table 6175291 CDO Cust.Template Setup	20
Table 6175292 CDO Page - Default filter.....	20
Table 6175293 CDO File (dll) (OnPrem only).....	20
Table 6175294 CDO Vendor Setup	21
Table 6175295 CDO Vendor Template Setup	21
Table 6175296 CDO Temp Blob	21
Table 6175297 CDO E-Mail Signature	21

Table 6175298 CDO E-Mail Signature Attach.	21
Table 6175299 CDO E-Document Send Code	22
Table 6175300 CDO Send Code	23
Table 6175301 CDO File	23
Table 6175302 CDO Log Attachment	23
Table 6175303 CDO Printer	23
Table 6175304 CDO Printer Selection	23
Table 6175305 CDO Print document	24
Table 6175306 CDO File Download Document.....	24
Table 6175307 CDO E-Mail Templ. Line Report.....	25
Table 6175308 CDO Azure Application Setup	25
Table 6175309 CDO Azure User(E-Mail) Account.....	26
Table 6175310 CDO Connected Service	26
Table 6175311 CDO Service Printer	26
Useful functions	27
Codeunit 6175303 CDO E-Mail Handler	27
<i>DocEMailOpen()</i> – Opens the email.	27
<i>DocEMailSend()</i> – Set the email in queue or send the email.	27
<i>DocPrint()</i> – Print the document (runs the report).	27
<i>DocClientPrintPDF()</i> – Prints the PDF using Document Output.....	27
<i>DocCreateElectronicDoc()</i> – Creates the electronic document (xml).....	27
<i>DocSave()</i> – Creates the PDF and downloads the PDF.....	27
<i>DocHandle()</i> – Handles the PDF using the Output Profile.....	27
<i>SetTemplateCodeFilter()</i> – Forces the functions to use specific email template.....	27
<i>SetRecRefFilter()</i> – Use to set filter on marked records, like after using <i>CurrPage.SetSelectionFilter()</i>	27
Open email.....	27
Queue email:.....	27
Add attachment(s) using event. (Create PDF with report ID).....	28
Table 6175301 CDO File	29
<i>CreateDocumentFromReport()</i> – Creates PDF from report and saves in DO File blob.	29
<i>MergeWithPDF()</i> – Merges one DO File PDF with another DO File PDF.	29
<i>SetBackgroundPDF()</i> – Sets background on DO File PDF with another DO File PDF.	29
Codeunit 6175296 CDO E-Mail Template Management.....	29
Find Template line with report ID:.....	29

<i>Find Template line with template code:</i>	29
Table 6175284 E-Mail Template Line.....	30
<i>RecipientsIsEmpty() : Boolean - Recipients Is Empty</i>	30
<i>GetRecipients() - Get Recipients, To, Cc and Bcc</i>	30
<i>Create new Merge Field Finder (Codeunit). (you can also use event)</i>	31
Events	33
OnFindTemplateWithCode.....	33
OnFindTemplateWithReportID.....	33
OnGetFromEMailAddress.....	33
OnBeforeCreateAndSendMail	33
OnBeforeGetRecipients.....	34
OnGetRecipients	35
OnGetRecipientsFromTemplateLine.....	36
OnBeforeInsertSignature.....	36
OnAttachFilesToMail.....	36
OnPrepareMail.....	37
OnBeforeSendMail (deprecated).....	37
OnBeforeSendMailExt.....	37
OnOutlookMailSent (FOB only)	38
OnSMTPMailSent	38
OnBeforeEDoc	38
OnAfterEDoc.....	38
OnBeforePrint.....	39
OnAfterPrint	39
OnLogCreated	39
OnBeforeSaveDoc	39
OnMergeFieldFind	40
OnPDFMerge	42
OnPDFSetBackground	42
OnPDFSetBackgroundWithFP	42
OnPDFSetBackgroundWithLP	42
OnPDFSetBackgroundWithFPandLP.....	43
OnPDFEmbed.....	43
OnPDFDigitalSign	43
OnPasswordProtectPDF	44

OnBeforeCreateDocument (deprecated).....	44
OnBeforeCreateDocumentExt.....	44
OnBeforeDocumentIsProtected.....	45
OnAfterCreateDocument.....	45
OnGetReportParameters.....	45
OnFindReportID.....	45
OnGetReportSelection.....	45
OnGetReportIDFromTable.....	46
OnGetReportSelectionFromTable.....	46
OnSetRecipientsSetCustomFilter.....	46
OnEMailRecipientsFieldOnLookupSetFilter.....	46
OnGetLanguageCodeFieldNo.....	46
OnGetVariantRecord.....	47
OnBeforePostAndHandleSalesHeader.....	47
OnBeforeSendPostAndHandleSalesHeader.....	47
OnBeforeSendPostAndHandleSalesShipmentHeader.....	47
OnBeforeSendPostAndHandleSalesInvoiceHeader.....	48
OnBeforeSendPostAndHandleSalesCrMemoHeader.....	48
OnBeforeSendPostAndHandleReturnReceiptHeader.....	48
OnBeforePostAndHandlePurchHeader.....	48
OnBeforeSendPostAndHandlePurchRcptHeader.....	48
OnBeforeSendPostAndHandlePurchInvoiceHeader.....	48
OnBeforeSendPostAndHandlePurchCrMemoHeader.....	48
OnBeforeSendPostAndHandlePurchShipmentHeader.....	49
OnBeforePostAndHandleServiceHeader.....	49
OnBeforeSendPostAndHandleServiceShipmentHeader.....	49
OnBeforeSendPostAndHandleServiceInvoiceHeader.....	49
OnBeforeSendPostAndHandleServiceCrMemoHeader.....	49
SetReportSelectionGroup (page 6175403 "CDO Report Selection Usage").....	49
OnImportServerFile (Table 6175296 "CDO Temp Blob", OnPrem only).....	50
OnExportServerFile (Table 6175296 "CDO Temp Blob", OnPrem only).....	50
OnImportServerFile (Table 6175301 "CDO File").....	50
OnExportServerFile (Table 6175301 "CDO File").....	50
Pages.....	51
Reports.....	54

6175271 CDO Copy E-Mail Template	54
6175272 CDO Create PDF files	54
6175273 CDO UpdateE-MailLog(Ver. 1.39)	54
6175274 CDO CreateCustomerE-MailRecip.	54
6175275 Create Vendor E-Mail recip.....	54
6175277 CDO Update Customer Setup.....	54
6175278 CDO CopyE-MailFromDoc.layout.....	54
Codeunits	55
6175271 CDO Printer Management.....	55
6175272 CDO Document E-Mail Management.....	55
6175273 CDO Document-Print Functions	55
6175274 CDO Continia Online PDF Mgt.	55
6175275 CDO dll PDF Management.....	55
6175276 CDO E-Mail Management	55
6175277 CDO .Net SMTP Management	55
6175278 CDO E-MailTemplatelImportExport	56
6175279 CDO Outlook Management	56
6175280 CDO Print to File.....	56
6175281 CDO SMTP Management.....	56
6175282 CDO Merge Field Value Finder.....	56
6175283 CDO NAV App.ServerE-MailJobMgt	56
6175284 CDO BLOB Management	56
6175285 CDO Open Documents.....	56
6175286 CDO Queue Mangement	56
6175287 CDO ContiniaPDF Management	56
6175288 CDO Data Upgrade	56
6175289 CDO Upgrade to 1.36 - Step 1.....	56
6175290 CDO Upgrade to 1.36 - Final.....	56
6175291 CDO Create Roles	57
6175292 CDO Stdandard NAV Actions	57
6175293 CDO Download and Create AddIns	57
6175294 CDO Table Field Array Mgt.	57
6175295 CDO Recipient Mgt.....	57
6175296 CDO E-Mail Template Mangement.....	57
6175297 CDO Send Cust. Statement Mgt.	57

6175298 CDO Events	57
6175299 CDO Functions.....	57
6175300 Doc. Output Ver. 2.0 Convert.....	57
6175301 CDO Sales-Post and Handle	57
6175303 CDO E-Mail Handler	57
6175304 CDO Continia Performance Mgt.	57
6175305 CDO Issue Document.....	57
6175306 CDO Mail Management	57
6175307 CDO Electronic Document Mgt.	58
6175308 CDO Web Service E-Mail Log	58
6175309 CDO Outlook on NST Management	58
6175310 CDO Subscribers.....	58
6175311 CDO E-Document Response.....	58
6175312 CDO Unhandled Sales Pages Mgt.	58
6175313 CDO UnhandledPurchasePagesMgt.....	58
6175314 CDO UnhandledServicePagesMgt.....	58
6175315 CDO Remittance Mangement.....	58
6175317 CDO Core Event Handler.....	58
6175318 CDO Show E-MailPrint Statement.....	58
6175319 CDO Log Management.....	58
6175320 CDO String Functions.....	58
6175321 CDO Usage Management.....	58
6175322 CDO Http Management.....	58
6175323 CDO Xml Document.....	59
6175324 CDO Xml Node	59
6175325 CDO Xml Node List	59
6175326 CDO Xml Management.....	59
6175327 CDO E-mail Sign. Import Export.....	59
6175328 CDO Conversion	59
6175329 CDO Print Web Service	59
6175330 CDO File Download Web Service.....	59
6175331 CDO Open Unhandled Sales Quote	59
6175332 CDO Open Unhandled Sales Order.....	59
6175333 CDO Open Unhandled Sales Inv.	59
6175334 CDO CDN Proxy Implementation	59

6175335 CDO Send Mail Management.....	59
6175337 CDO Setup Management.....	59
6175338 CDO Setup Data	59
6175339 CDO Convert to Output Profile.....	60
6175342 CDO Install.....	60
6175343 CDO Microsoft Graph Rest Api.....	60
6175344 CDO Mail Message Builder.....	60
6175345 CDO OAuth Management.....	60
6175346 CDO Json Web Token (JWT) Mgt.	60
6175347 CDO JSON Management.....	60
6175348 CDO Json Writer.....	60
6175349 CDO App Notification Subscr	60
6175350 CDO Purch.-Post and Handle	60
6175351 CDO Service-Post and Handle.....	60
6175352 CDO Azure Blob Storage.....	60
6175353 CDO Connected Services Handler.....	60
.Net components.....	61
<i>Continia.DocumentOutput.PDF.dll</i>	61
<i>GdPicture</i>	61
<i>Continia.DocumentOutput.Outlook.dll (FOB only)</i>	62
<i>Microsoft Outlook (FOB only)</i>	62

Introduction

Document Output is an add-on for Microsoft Business Central (and NAV) that enables you to send documents as attached PDF using an e-mail template for each document type.

This manual introduces gives you a technical overview of Document Output and to basic development issues.

Continia Document Output will subsequently be referred to in this document as DO.

Design

Print and send emails

Everything that needs to be printed or send as PDF with mail is done with an “E-Mail Template Header” or “E-Mail Template Line” (Tables). The “E-Mail Template Line” table has functions to generate PDF and send the PDF with e-mail. See [Useful functions](#).

Generating PDFs

All PDF's is generated with the Codeunit 6175280 “Document-Print Functions”

Data Model

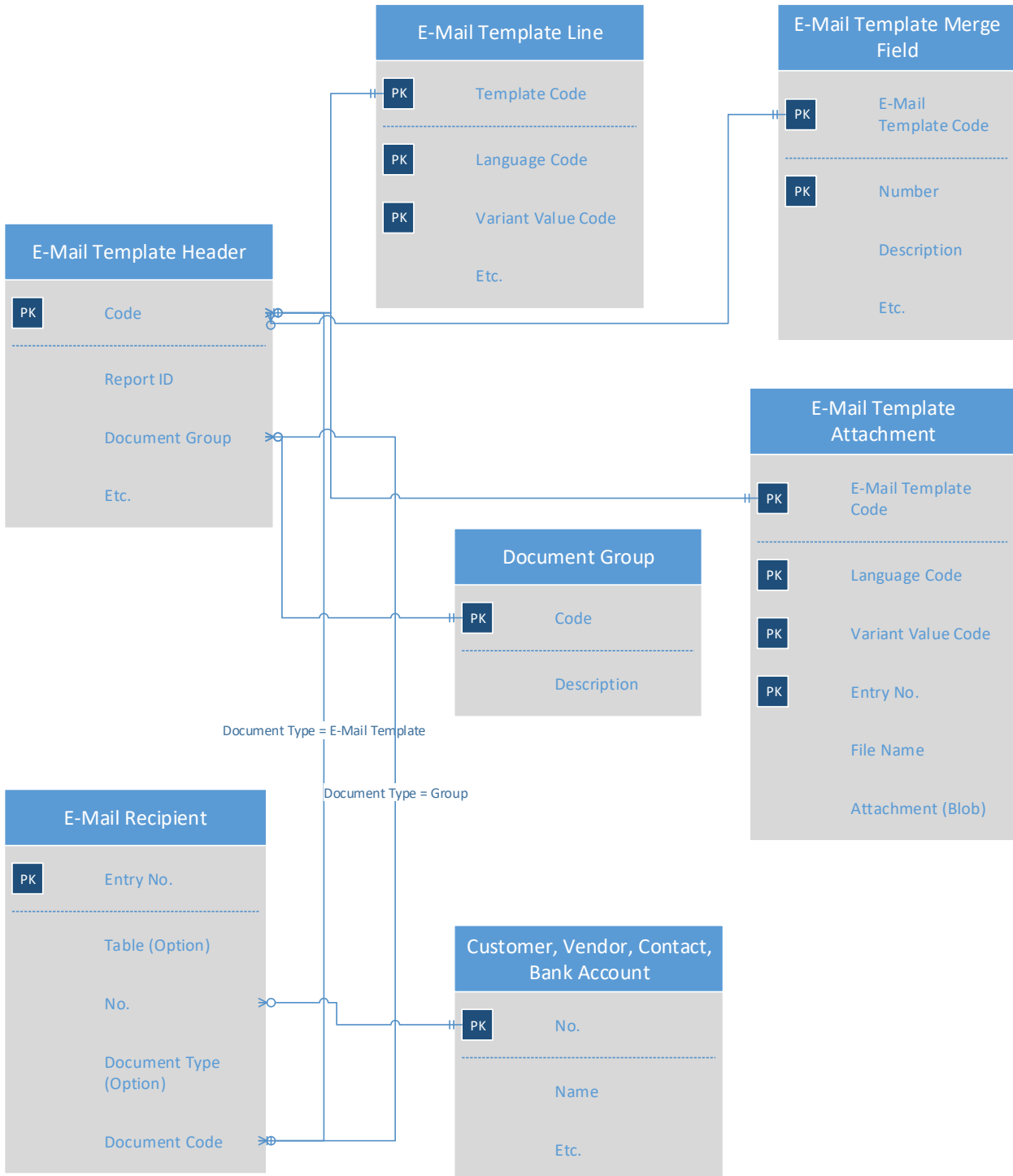


Table 6175271 CDO E-Mail Template

Field No.	Field Name	Data Type	Length
1	Code	Code	20
2	Report-ID	Integer	
3	Report Name	Text	250
4	Language Code	Code	10
5	Engine	Option	
6	Printer Name	Text	250
7	File Name	Text	250
8	To E-Mail Link Table No.	Integer	
9	To E-Mail Link Field Type	Option	
10	To E-Mail Link Field No.	Integer	
11	To E-Mail Link Table Name	Text	250
12	To E-Mail Link Field Name	Text	30
14	E-Mail is Mandatory	Boolean	
15	Enabled	Boolean	
18	Test Recipient	Text	80
20	Subject Template	BLOB	
21	E-Mail Template (Web Archive)	BLOB	
22	E-Mail Template (HTML)	BLOB	
30	Mail Format	Option	
32	Use Outlook Signature	Boolean	
33	Mail Importance	Option	
34	From E-Mail Address	Text	250
36	Fixed Cc Recipient(s)	Text	250
37	Fixed Bcc Recipient(s)	Text	250
39	SMTP Server	Code	10
40	Log E-Mails	Boolean	
44	Attach Open Documents	Boolean	
45	Attach Open Doc. File Name	Text	250
50	Document Group	Code	20
60	Document Folder	Text	250
61	Do Not Save to Document Folder	Boolean	
70	Use Doc. Output in Std. NAV	Option	
100	Background PDF File Name	Text	250
101	Background PDF	BLOB	
104	Merge PDF	BLOB	

Table 6175272 CDO E-Mail Recipient

Field No.	Field Name	Data Type	Length
1	Table	Option (FOB) / Enum CDOTable	
2	No.	Code	20
3	Document Type	Option (FOB) / Enum CDODocumentType	
4	Document Code	Code	20
5	Recipient Type	Option (FOB) / Enum CDORecipientType	
6	E-Mail Type	Option (FOB) /	

		Enum CDOEMailType	
7	Contact No.	Code	20
8	Contact Name	Text	100
9	Contact Company No.	Code	20
10	E-Mail	Text	80
11	Entry No.	Integer	
15	Contact E-Mail	Text	250
20	Do not Attach Open Documents	Boolean	

Table 6175273 CDO E-Mail Log

Field No.	Field Name	Data Type	Length
1	Entry No.	Integer	
2	E-Mail Template Code	Code	20
3	Language Code	Code	10
4	User ID	Code	50
5	Date Time	DateTime	
6	Report-ID	Integer	
7	Record ID	RecordID	
8	Table No.	Integer	
9	Filter	Text	250
10	To	Text	250
11	Cc	Text	250
12	Bcc	Text	250
13	Linked to Table	Option (FOB) / Enum CDOLinkedToTable	
14	Linked to Code	Code	20
15	Dimension Code	Code	20
16	Template Variant Value Code	Code	20
17	Type	Enum CDOLogType	
18	Combined in Entry No.	Integer	
19	Hidden	Boolean	
20	E-Mail	BLOB	
21	File Name	Text	250
22	Sent with	Option (FOB) / Enum CDOLogSentWith	
24	SMTP Server	Code	10
25	From E-Mail Name	Text	100
26	From E-Mail Address	Text	100
28	File Path	Text	250
33	Primary Key Field 1 No.	Integer	
34	Primary Key Field 1 Name	Text	80
35	Primary Key Field 1 Value	Text	50
36	Primary Key Field 2 No.	Integer	
37	Primary Key Field 2 Name	Text	80
38	Primary Key Field 2 Value	Text	50
40	Subject	Text	250
50	To BLOB	BLOB	
51	Cc BLOB	BLOB	
52	Bcc BLOB	BLOB	
56	Filter BLOB	BLOB	

60	Attachments	Integer (calculated)	
70	PDF Password	Text	100

Table 6175274 CDO E-Mail Template Attachment

Field No.	Field Name	Data Type	Length
1	E-Mail Template Code	Code	20
2	Language Code	Code	10
3	Entry No.	Integer	
4	Attachment	BLOB	
5	File Name	Text	250
6	Template Type	Option (FOB) / Enum CDOTemplateType	
7	Content Type	Text	30
8	CID	Text	250
9	Variant Value Code	Code	20
10	Template Variant Field No.	Integer	
12	Dimension Code	Code	20

Table 6175275 CDO E-Mail Template MergeField

Field No.	Field Name	Data Type	Length
1	E-Mail Template Code	Code	20
5	Number	Integer	
6	Description	Text	50
7	Get Field From	Option	
10	Get From Table No.	Integer	
11	Get From Field No.	Integer	
12	Get From Table Name	Text	30
13	Get From Field Name	Text	30
14	Get From Field Caption	Text	80
16	Codeunit ID	Integer	
17	Codeunit Parameter	Text	50
20	Type	Option (FOB) / Enum CDOMergeType	
21	Web Address	Text	250
22	Show Text	Text	80
24	Format String	Text	100
26	Width	Decimal	
27	Height	Decimal	
30	Value From Table Field Array	Text	140

Table 6175276 CDO Document Group

Field No.	Field Name	Data Type	Length
1	Code	Code	20
2	Description	Text	50

Table 6175277 CDO E-Mail Codeunit Parameter

Field No.	Field Name	Data Type	Length
1	Table No.	Integer	
2	Position	Text	250
3	Template Code	Code	20
4	Language Code	Code	10
5	ReturnValue	Text	250
6	Parameter	Text	50
7	View	Text	250
8	Contact No.	Code	20

Table 6175278 CDO SMTP Setup

Field No.	Field Name	Data Type	Length
1	Code	Code	10
2	SMTP Server Address	Text	250
3	Authentication	Option	
4	User ID	Text	80
5	Password	Text	80
6	Use SSL	Boolean	
7	Port	Integer	
8	Connection Timeout (sec)	Integer	
9	From E-Mail Address	Text	80
10	From E-Mail Name	Text	50
20	Max. no. of mails per minute	Integer	
30	Protocol	Option	

Table 6175279 CDO Statement Req. Page Setup (Not used)

Field No.	Field Name	Data Type	Length
1	Primary Key	Code	10
2	Print Entries Due	Boolean	
3	Print All Having Entry	Boolean	
4	Print All Having Bal	Boolean	
5	Print Reversed Entries	Boolean	
6	Print Unapplied Entries	Boolean	
7	Include Aging Band	Boolean	
8	Period Length	DateFormula	
9	Date Choice	Option	
10	Log Interaction	Boolean	

Table 6175280 CDO E-Mail Job

Field No.	Field Name	Data Type	Length
1	Job No.	Code	10
2	Table No.	Integer	
3	Table Caption	Text	249
4	Type	Option	
5	Table	Option	
6	Enabled	Boolean	
7	Description	Text	50
10	Table Filter	TableFilter	
14	Disable Check for sent erlier	Boolean	
16	E-Mail Template Code	Code	20
20	Last run time	DateTime	
30	Run on Mondays	Boolean	
31	Run on Tuesdays	Boolean	
32	Run on Wednesdays	Boolean	
33	Run on Thursdays	Boolean	
34	Run on Fridays	Boolean	
35	Run on Saturdays	Boolean	
36	Run on Sundays	Boolean	
37	Starting Time	Time	
38	Ending Time	Time	

Table 6175281 CDO Setup

Field No.	Field Name	Data Type	Length
1	Primary Key	Code	10
5	Default Engine	Option	
6	Default Printer Name	Text	250
30	Test Recipient	Text	80
36	Fixed Cc Recipient(s)	Text	250
37	Fixed Bcc Recipient(s)	Text	250
40	E-Mail Sending Method	Option	
46	Print Timeout (sec.)	Integer	
50	Statement Report ID	Integer	
51	Statement Report Name	Text	30
56	Package Tracking Template	Code	20
60	Document Folder	Text	250
65	Log Storage Type	Option	
66	Log Archive Path	Text	250
70	Sales Quote E-Mail Action	Option	
71	Sales Order E-Mail Action	Option	
75	Purchase Order E-Mail Action	Option	
80	Html edit command	Text	250
90	Electronic Doc. (Invoice) Type	Option	
91	Electronic Doc. (Invoice) ID	Integer	
94	Electronic Doc.(Cr. Memo) Type	Option	
95	Electronic Doc.(Cr. Memo) ID	Integer	
100	Data Upgrade Version	Code	20
104	Only Use Output Profiles	Boolean	

119	E-Mail Log WS Protocol	Option	
120	E-Mail Log Web Service Server	Text	80
122	E-Mail Log WS Instance Name	Text	80
124	E-Mail Log WS Port (SOAP)	Integer	
150	Remittance Report (Journal)	Integer	
151	Remittance Report (Ledger)	Integer	
155	Picking List Report	Integer	
156	Put-away List Report	Integer	
159	Local Print Service Enabled	Boolean	
160	Local Print Service Port	Integer	
170	Use BC Print Queue	Boolean	
180	Max. no. of mails per minute	Integer	
181	Max. no. of document retries	Integer	
200	Azure Storage Account Name	Text	50
201	Azure Storage Account Key	Text	100
202	Azure Blob Container Name	Text	50
300	Hide Standard Mail Actions	Boolean	
302	Hide Standard Print Actions	Boolean	

Table 6175282 CDO Queue Entry

Field No.	Field Name	Data Type	Length
1	Entry No.	Integer	
2	E-Mail Template Code	Code	20
3	Language Code	Code	10
4	User ID	Code	50
5	Date Time	DateTime	
6	Combine Documents to one PDF	Code	20
7	Record ID	RecordID	
8	Table No.	Integer	
9	Filter	Text	250
10	Filter BLOB	BLOB	
11	Template Variant Value Code	Code	20
12	Report Selection Usage	Integer	
14	Print	Boolean	
15	E-Mail	Boolean	
17	Request Page (XML)	BLOB	
18	Batch No.	Integer	
20	Error	Boolean	
21	Error message	Text	250
22	Error message BLOB	BLOB	
23	Error Date Time	DateTime	
24	No. of retries	Integer	

Table 6175283 CDO E-Mail Template Header

Field No.	Field Name	Data Type	Length
1	Code	Code	20
3	Template Variant Field No.	Integer	
4	Dimension Code	Code	20
5	Document Group	Code	20
6	Report-ID	Integer	
7	Report Name	Text	30
8	Engine	Option	
9	Printer Name	Text	250
10	First Table in Report	Integer	
11	First Table in Report Table N.	Text	30
12	Report Selection Usage	Enum CDOReportSelectionUsage	
14	E-Mail is Mandatory	Boolean	
16	Template Variant Field Caption	Text	250
18	Test Recipient	Text	80
20	E-Mail Recipients Field	Integer	
21	E-Mail Recipients Field Capt.	Text	250
22	E-Mail Address Field	Text	140
24	Find from address on queue	Enum CDOFindFromAddressOnQueue	
25	From E-Mail	Option	
26	From E-Mail Address	Text	250
27	From E-Mail Name	Text	50
28	Show From E-Mail Address	Boolean	
29	From E-Mail Address Field	Text	140
30	SMTP Server	Code	10
31	SMTP E-Mail Template	Option (FOB) / Enum CDOTemplateType	
32	Log E-Mails	Boolean	
33	Keep E-Mail log for	DateFormula	
34	Skip E-Mail in log	Boolean	
36	Fixed Cc Recipient(s)	Text	250
37	Fixed Bcc Recipient(s)	Text	250
40	Merge Fields	Integer	
50	On E-Mail (SMTP)	Option	
52	Open E-Mail with	Option	
60	Document Folder	Text	250
61	Do Not Save to Document Folder	Boolean	
64	Include Document Attachments	Boolean	
65	Include Doc. Line Attachments	Boolean	
67	Zip Document Attachments	Boolean	
70	Linked to	Option	
71	Linked to Field No.	Integer	
72	Linked to Field Caption	Text	250
76	Combine Documents to one PDF	Integer	
77	Comb.Docs.to one PDF Field Ca.	Text	250
80	PDF Sign Certificate	BLOB	
81	PDF Sign File Name	Text	250

83	PDF Sign Password	Text	80
85	PDF Sign Reason	Text	50
86	PDF Sign Location	Text	50
90	PDF Password	Text	100

Table 6175284 CDO E-Mail Template Line

Field No.	Field Name	Data Type	Length
1	E-Mail Template Code	Code	20
2	Language Code	Code	10
3	Template Variant Value Code	Code	20
5	Enabled	Boolean	
6	Report-ID	Integer	
7	File Name	Text	250
8	First Table in Report	Integer	
9	Combined Docs. File Name	Text	250
10	Template Variant Field No.	Integer	
12	Dimension Code	Code	20
14	Reports	Integer (calculated)	
16	Standard report	Option	
17	Custom Report Layout ID	Integer	
18	Custom Report Layout Code	Code	20
19	Report Layout Description	Text	250
20	Subject Template	BLOB	
21	Outlook E-Mail Template	BLOB	
22	SMTP E-Mail Template	BLOB	
23	HTML E-Mail Template	BLOB	
24	Use Html Template in Outlook	Boolean	
25	Plain Text E-Mail Template	BLOB	
30	Mail Format	Option (FOB) / Enum CDOMailFormat	
32	Use Outlook Signature	Boolean	
33	Mail Importance	Option / Enum CDOMailImportance	
34	From E-Mail Address	Text	250
35	From E-Mail Name	Text	50
36	Fixed Cc Recipient(s)	Text	250
37	Fixed Bcc Recipient(s)	Text	250
43	Attach/Merge Open Documents	Enum CDOAttachMergeOpenDoc	
44	Attach Open Documents	Boolean	
45	Attach Open Doc. File Name	Text	250
47	Attach Open Documents Filter	Option (FOB) / Enum CDOAttachOpenDocFilter	
50	E-Document File Name	Text	250
56	Disable Combine Documents	Boolean	
60	Document Folder	Text	250
61	Do Not Save to Document Folder	Boolean	
65	Document Attachments Filter	Text	80
70	Log E-Mails	Boolean	
71	Skip E-Mail in log	Boolean	
80	Show Request Page	Boolean	

81	Request Page (xml)	BLOB	
100	Background PDF File Name	Text	250
101	Background PDF	BLOB	
102	Preserve Links	Boolean	
103	Merge PDF File Name	Text	250
104	Merge PDF	BLOB	
105	Print uses	Option	
110	PDF Password	Text	100
120	Background FP PDF File Name	Text	250
121	Background First Page PDF	BLOB	
122	Background LP PDF File Name	Text	250
123	Background Last Page PDF	BLOB	
130	One Page Document Background	Enum CDOOnePageDocBackground	
150	Request Read Receipt	Boolean	
151	Request Delivery Receipt	Boolean	

Table 6175285 CDO Send Customer Statement

Field No.	Field Name	Data Type	Length
1	Code	Code	10
10	Send statement if	Option	
11	Period Date Formula	DateFormula	
12	Send statement if Bal.Due D.F.	DateFormula	
14	Do not send if neg. balance	Boolean	
20	Change to manual on Fin.Chr.M.	Boolean	
21	Change to manual on Reminder	Boolean	
26	E-Mail Template Code	Code	20
30	Output	Option	

Table 6175286 CDO Customer Setup

Field No.	Field Name	Data Type	Length
1	Customer No.	Code	20
3	Customer Name	Text	50
10	Automatic statement	Option	
12	Last Automatic Date	Date	
14	Send Statement Code	Code	10
20	First statement start date	Date	
26	Last per.statement start date	Date	
27	Last per.statement end date	Date	
28	Last bal.due statem.start date	Date	
29	Last bal.due statem. end date	Date	
30	Last user statement date	Date	
31	Last user statement user ID	Code	50
40	Template Setup	Integer	
50	On E-Mail (SMTP)	Option	
52	Send Code	Code	20
54	Always send using Outlook	Boolean	
60	PDF Password	Text	100

Table 6175287 CDO Statement Journal Line

Field No.	Field Name	Data Type	Length
1	Code	Code	10
2	Line No.	Integer	
8	Type	Option	
10	Customer No.	Code	20
12	Customer Name	Text	100
14	Start Date	Date	
15	End Date	Date	
18	E-Mail Template Code	Code	20
20	Statement PDF	BLOB	
21	PDF Filename	Text	250

Table 6175288 CDO Object Stub (FOB only)

Field No.	Field Name	Data Type	Length
1	Object Type	Option	
2	Object ID	Integer	
11	ID	Integer	
12	ENU Caption	Text	250
14	Exists	Boolean	
16	Insert After ID	Integer	
17	Insert Before ID	Integer	
18	Version	Text	30
20	Create Type	Option	
22	Has New Stub Before	Boolean	
23	Has New Stub After	Boolean	
30	Page Stub Type	Option	
50	Comment	Text	250
60	XML	BLOB	
80	Original Date	Date	
81	Original Time	Time	
82	Original Modified	Boolean	
83	Original Version List	Text	80
86	New Date	Date	
87	New Time	Time	
88	New Modified	Boolean	
89	New Version List	Text	80

Table 6175289 CDO E-Mail Templ.Imp.Worksht.L

Field No.	Field Name	Data Type	Length
1	E-Mail Template Code	Code	20
2	Language Code	Code	10
3	Template Variant Value Code	Code	20
7	Report-ID	Integer	
8	Report Selection Usage	Option	
10	Action	Option	
11	Template Header Exists	Boolean	

12	Template Exists	Boolean	
14	Report Exists	Boolean	
18	New E-Mail Template Code	Code	20
20	New Language Code	Code	10

Table 6175290 CDO E-Mail Recipient Template

Field No.	Field Name	Data Type	Length
1	Table	Option / Enum CDOTable	
3	Document Type	Option / Enum CDODocumentType	
4	Document Code	Code	20
5	Recipient Type	Option / Enum CDORecipientType	
6	E-Mail Type	Option / Enum CDOEmailType	
11	Entry No.	Integer	
20	Do not Attach Open Documents	Boolean	

Table 6175291 CDO Cust.Template Setup

Field No.	Field Name	Data Type	Length
1	Customer No.	Code	20
3	Customer Name	Text	100
6	E-Mail Template Code	Code	20
10	On E-Mail (SMTP)	Option	
12	E-Document Send Code	Code	20
14	Always send using Outlook	Boolean	

Table 6175292 CDO Page - Default filter

Field No.	Field Name	Data Type	Length
1	Page No.	Integer	
10	Table No.	Integer	
16	Page Filter	TableFilter	
20	E-Mail Log Filter	Text	30
24	Only Documents With E-Mail	Integer	
28	View (Blob)	BLOB	
30	Show E-Mail	Boolean	
31	Show Print	Boolean	
32	Show E-Document	Boolean	

Table 6175293 CDO File (dll) (OnPrem only)

Field No.	Field Name	Data Type	Length
1	Entry No.	Integer	
10	File Name	Text	100

12	Use on Clients	Boolean	
14	Use on Service Tiers	Boolean	
20	File	BLOB	
21	BLOB Size (KB)	Integer	
22	File Version	Text	50
23	Product Version	Text	50

Table 6175294 CDO Vendor Setup

Field No.	Field Name	Data Type	Length
1	Vendor No.	Code	20
3	Vendor Name	Text	100
40	Template Setup	Integer	
50	On E-Mail (SMTP)	Option	
52	Send Code	Code	20
60	Send Remittance	Boolean	

Table 6175295 CDO Vendor Template Setup

Field No.	Field Name	Data Type	Length
1	Vendor No.	Code	20
3	Vendor Name	Text	100
6	E-Mail Template Code	Code	20
10	On E-Mail (SMTP)	Option	

Table 6175296 CDO Temp Blob

Field No.	Field Name	Data Type	Length
1	Primary Key	Integer	
2	Blob	BLOB	

Table 6175297 CDO E-Mail Signature

Field No.	Field Name	Data Type	Length
1	Code	Code	20
2	Start Date	Date	
10	Description	Text	80
20	HTML	Blob	

Table 6175298 CDO E-Mail Signature Attach.

Field No.	Field Name	Data Type	Length
1	Signature Code	Code	20
2	Signature Start Date	Date	
3	CID	Text	250
4	File Name	Text	250
5	Content Type	Text	30
6	Attachment	BLOB	

7	Encoding	Text	30
---	----------	------	----

Table 6175299 CDO E-Document Send Code

Field No.	Field Name	Data Type	Length
1	Code	Code	20
5	Description	Text	50
10	Electronic Document Format	Code	20
16	Export Folder	Text	250
20	Sales Invoice Validation CU ID	Integer	
21	Sales Inv. Validation CU Name	Text	250
22	Sales Invoice Export Type	Option	
24	Sales Invoice Export ID	Integer	
26	Sales Invoice Delivery CU ID	Integer	
27	Sales Inv. Delivery CU Caption	Text	250
28	Sales Invoice Status CU ID	Integer	
29	Sales Inv. Status CU Caption	Text	250
30	Credit Memo Validation CU ID	Integer	
31	Credit Memo Validation CU Name	Text	250
32	Credit Memo Export Type	Option	
34	Credit Memo Export ID	Integer	
36	Credit Memo Delivery CU ID	Integer	
37	Credit Memo Delivery CU Capt.	Text	250
38	Credit Memo Status CU ID	Integer	
39	Credit Memo Status CU Caption	Text	250
40	Reminder Validation CU ID	Integer	
41	Reminder Validation CU Name	Text	250
42	Reminder Export Type	Option	
44	Reminder Export ID	Integer	
46	Reminder Delivery CU ID	Integer	
47	Reminder Delivery CU Caption	Text	250
48	Reminder Status CU ID	Integer	
49	Reminder Status CU Caption	Text	250
50	Ser.SalesInv. Validation CU ID	Integer	
52	Service Sales Inv. Export Type	Option	
54	Service Sales Inv. Export ID	Integer	
56	Ser. Sales Inv. Delivery CU ID	Integer	
58	Ser. Sales Inv. Status CU ID	Integer	
60	Ser. Cr. Memo Validation CU ID	Integer	
62	Service Cr. Memo Export Type	Option	
64	Service Credit Memo Export ID	Integer	
66	Service Cr.Memo Delivery CU ID	Integer	
68	Service Cr. Memo Status CU ID	Integer	
200	CDN Sender Type	Option	
201	CDN Sender ID Type	Integer	
202	CDN Sender ID Value	Text	250
230	Participation GUID	GUID	

Table 6175300 CDO Send Code

Field No.	Field Name	Data Type	Length
1	Send Code	Code	20
5	Description	Text	50
12	Template	Code	20
14	E-Mail	Boolean	
16	Print	Boolean	
18	E-Document Send Code	Code	20
20	Email	Option	
24	Create PDF/A	Boolean	
30	Append E-Document to PDF	Boolean	

Table 6175301 CDO File

Field No.	Field Name	Data Type	Length
1	Entry No.	Integer	
10	Filename	Text	250
12	File type	Text	100
20	File Blob	BLOB	
30	PDF Password	Text	100
31	File Blob Password Protected	BLOB	

Table 6175302 CDO Log Attachment

Field No.	Field Name	Data Type	Length
1	Log Entry No.	Integer	
2	Entry No.	Integer	
10	File Name	Text	250
12	Attachment	BLOB	

Table 6175303 CDO Printer

Field No.	Field Name	Data Type	Length
1	Name	Text	250
2	Status	Text	100
3	IsDefault	Boolean	
4	IsNetworkPrinter	Boolean	

Table 6175304 CDO Printer Selection

Field No.	Field Name	Data Type	Length
1	User ID	Code	50
2	Report ID	Integer	
3	Report Caption	Text	250
4	Machine Name	Text	250
5	Printer Name	Text	250

Table 6175305 CDO Print document

Field No.	Field Name	Data Type	Length
1	Entry no.	Integer	
10	User ID	Code	50
12	Print on computername	Text	30
14	Printrername	Text	250
20	Filename	Text	250
22	Filetype	Enum CDOPrintFiletype	
24	Filedata	BLOB	
30	Log entry no.	Integer	
40	Print started	DateTime	
42	Error message	Text	250
44	No. of errors	Integer	

Table 6175306 CDO File Download Document

Field No.	Field Name	Data Type	Length
1	Entry no.	Integer	
2	Path	Text	250
3	Filename	Text	250
4	Filedata	BLOB	
5	Download started	DateTime	
6	Error message	Text	250
7	No. of errors	Integer	

Table 6175307 CDO E-Mail Templ. Line Report

Field No.	Field Name	Data Type	Length
1	E-Mail Template Code	Code	20
2	Language Code	Code	10
3	Template Variant Value Code	Code	20
5	Sequence	Code	10
6	Report-ID	Integer	
7	File Name	Text	250
9	Combined Docs. File Name	Text	250
17	Custom Report Layout ID	Integer	
18	Custom Report Layout Code	Code	20
19	Report Layout Description	Text	250
80	Show Request Page	Boolean	
81	Request Page (xml)	BLOB	
100	Background PDF File Name	Text	250
101	Background PDF	BLOB	
103	Merge PDF File Name	Text	250
104	Merge PDF	BLOB	
120	Background FP PDF File Name	Text	250
121	Background First Page PDF	BLOB	
122	Background LP PDF File Name	Text	250
123	Background Last Page PDF	BLOB	
130	One Page Document Background	Option	
200	Report Name	Text	250

Table 6175308 CDO Azure Application Setup

Field No.	Field Name	Data Type	Length
1	Directory Code	Code	20
10	Name	Text	50
60	Primary domain	Text	100
80	From E-Mail Address	Text	80
81	From E-Mail Name	Text	50
100	Directory (tenant) ID	Text	36
102	Application (client) ID	Text	36
104	Client Secret	BLOB	
105	Client Secret is encrypted	Boolean	
106	Access Token	BLOB	
107	Access Token Expires At	DateTime	

Table 6175309 CDO Azure User(E-Mail) Account

Field No.	Field Name	Data Type	Length
1	Email	Text	100
2	Access Token	BLOB	
3	Refresh Token	BLOB	
4	Id Token	BLOB	
5	Access Token Expires At	DateTime	
6	Provider	Option	
7	ErrorMessage	Text	250

Table 6175310 CDO Connected Service

Field No.	Field Name	Data Type	Length
1	Machine Name	Text	30
2	Windows Log On User	Text	250
3	Application Type	Text	100
4	Updated At	DateTime	
5	Last Heartbeat	DateTime	
10	Local Print Enabled	Boolean	
11	Local Print Port	Integer	
20	Print Server Enabled	Boolean	
21	Use Default Printer	Boolean	
22	Default Printer Name	Text	250
30	File Download Enabled	Boolean	
31	Default File Download Path	Text	250
32	Use Default Download Folder	Boolean	

Table 6175311 CDO Service Printer

Field No.	Field Name	Data Type	Length
1	Name	Text	250
2	Status	Text	100
3	IsDefault	Boolean	
4	IsNetworkPrinter	Boolean	
5	Machine Name	Text	250

Useful functions

Codeunit 6175303 CDO E-Mail Handler

DocEMailOpen() – Opens the email.

DocEMailSend() – Set the email in queue or send the email.

DocPrint() – Print the document (runs the report).

DocClientPrintPDF() – Prints the PDF using Document Output

DocCreateElectronicDoc() – Creates the electronic document (xml)

DocSave() – Creates the PDF and downloads the PDF.

DocHandle() – Handles the PDF using the Output Profile.

SetTemplateCodeFilter() – Forces the functions to use specific email template.

SetRecRefFilter() – Use to set filter on marked records, like after using

CurrPage.SetSelectionFilter()

Open email.

```
var
    Customer: Record Customer;
    DocOutput: Codeunit "CDO E-Mail Handler";
begin
    Customer := Rec;
    Customer.SetRecFilter;
    DocOutput.DocEMailOpen(Customer, Customer.FieldNo("Language Code"),
Customer.GetView(true));
end;
```

Queue email:

```
var
    Customer: Record Customer;
    DocOutput: Codeunit "CDO E-Mail Handler";
begin
    Customer := Rec;
    Customer.SetRecFilter;
    DocOutput.DocEMailSend(true, Customer, Customer.FieldNo("Customer Language Code"),
Customer.GetView(true));
end;
```

Add attachment(s) using event. (Create PDF with report ID)

```
[EventSubscriber(ObjectType::Codeunit, Codeunit::"CDO Events", 'OnAttachFilesToMail', '',
false, false)]
local procedure OnAttachFilesToMail(var EMailTemplateLine: Record "CDO E-Mail Template
Line"; var DOFile: Record "CDO File"; var FilterRecord: RecordRef; var VariantRecord:
Variant; SMTP: Boolean)
var
    SalesInvoiceHeader: Record "Sales Invoice Header";
    NewDOFile: Record "CDO File";
begin
    case FilterRecord.Number of
        Database::"Sales Invoice Header":
            begin
                FilterRecord.SetTable(SalesInvoiceHeader);
                if DOFile.FindFirst() then begin

                    NewDOFile.Copy(DOFile, true);

                    // Create PDF from report
                    NewDOFile.Init();
                    NewDOFile.CreateDocumentFromReport(0, Report::"Standard Sales -
Invoice",
                        '', '', 'MyInvoice.pdf', FilterRecord); // 0 = pdf (ReportFormat)
                    NewDOFile.Insert(true);
                end
            end;
    end;
end;
end;
```

Table 6175301 CDO File

CreateDocumentFromReport() – Creates PDF from report and saves in DO File blob.

MergeWithPDF() – Merges one DO File PDF with another DO File PDF.

SetBackgroundPDF() – Sets background on DO File PDF with another DO File PDF.

Codeunit 6175296 CDO E-Mail Template Management

Find Template line with report ID:

```
var
    PurchaseHeader: Record "Purchase Header";
    EMailTemplateLine: Record "CDO E-Mail Template Line";
    EMailTemplateMgt: Codeunit "CDO E-Mail Template Management";
    RecRef: RecordRef;
    VariantRec: Variant;
begin
    PurchaseHeader := Rec;
    PurchaseHeader.SETRECFILTER;
    RecRef.GetTable(PurchaseHeader);
    if EMailTemplateMgt.FindTemplateWithReportID(EMailTemplateLine, Report::50100,
rec."Language Code", RecRef) then
        EMailTemplateLine.OpenOutlookEMail(RecRef, VariantRec, 0);
end;
```

Find Template line with template code:

```
var
    EMailTemplateLine: Record "CDO E-Mail Template Line";
    EMailTemplateMgt: Codeunit "CDO E-Mail Template Management";
    RecRef: RecordRef;
    VariantRec: Variant;
begin
    SalesHeader.SetRecFilter();
    VariantRec := SalesHeader;
    RecRef.GetTable(SalesHeader);

    if EMailTemplateMgt.FindTemplateWithCode(EMailTemplateLine, 'MYTEMPLATE', '',
RecRef) then begin
        //EMailTemplateLine.OpenOutlookEMail(RecRef, VariantRec, -1);
        EMailTemplateLine.QueueMail(RecRef, VariantRec, -1, 0)
    end;
end;
```

Table 6175284 E-Mail Template Line

RecipientsIsEmpty() : Boolean - Recipients Is Empty

GetRecipients() - Get Recipients, To, Cc and Bcc

Create new Merge Field Finder (Codeunit). (you can also use event)

You can program your own codeunit to find a Merge Field value.

The Codeunit can be used on a templates merge field setup with a parameter.

Use the function `SetReturnValue()` to set the return value.


```
codeunit 50201 "Merge Field Value Finder2"
{
    TableNo = "CDO E-Mail Codeunit Parameter";

    var
        RecRef: RecordRef;

    trigger OnRun()
    begin
        RecRef.Open(Rec."Table No.");
        RecRef.SetPosition(Rec.Position);

        if not RecRef.Find then
            exit;

        case Rec.Parameter of
            'WorkDescription':
                Rec.SetReturnValue := GetWorkDescription(RecRef, Rec.View);
        end;
    end;

    local procedure GetWorkDescription(var RecRef: RecordRef; View: Text): Text;
    var
        SalesHeader: Record "Sales Header";
        SalesShipmentHeader: Record "Sales Shipment Header";
        SalesInvoiceHeader: Record "Sales Invoice Header";
        SalesCrMemoHeader: Record "Sales Cr.Memo Header";
    begin
        case RecRef.Number of
            Database::"Sales Header":
                begin
                    RecRef.SetTable(SalesHeader);
                    exit(SalesHeader.GetWorkDescription());
                end;
            Database::"Sales Shipment Header":
                begin
                    RecRef.SetTable(SalesShipmentHeader);
                    exit(SalesShipmentHeader.GetWorkDescription());
                end;
            else
                exit;
        end;
    end;
end;
}
```

Events

All Document Output events can be found in Codeunit 6175298 “CDO Events”.

OnFindTemplateWithCode

Subscribe to this event to change the behavior when a template is found by code.

VAR	Parameter Name	Data Type	Subtype	Length
X	EMailTemplateLine	Record	CDO E-Mail Template Line	
	EMailTemplateCode	Code		20
	LanguageCode	Code		10
X	RecRef	RecordRef		
X	TemplateFound	Boolean		

OnFindTemplateWithReportID

Subscribe to this event to change the behavior when a template is found by report id.

VAR	Parameter Name	Data Type	Subtype	Length
X	EMailTemplateLine	Record	CDO E-Mail Template Line	
	ReportID	Integer		
	LanguageCode	Code		10
X	RecRef	RecordRef		
X	TemplateFound	Boolean		

OnGetFromEmailAddress

Subscribe to this event if you e.g., want to change the from email address.

VAR	Parameter Name	Data Type	Subtype	Length
X	EMailTemplateLine	Record	CDO E-Mail Template Line	
X	FromEMailName	Text		
X	FromEMailAddress	Text		
X	FilterRecord	RecordRef		

OnBeforeCreateAndSendMail

Subscribe to this event if you e.g., want to change how mails are sent.

VAR	Parameter Name	Data Type	Subtype	Length
X	EMailTemplateLine	Record	CDO E-Mail Template Line	
X	FilterRecord	RecordRef		
X	VariantRecord	Variant		
X	DOFile	Record	CDO File	
X	UseSMTP	Boolean		
X	UseHandleDoc	Boolean		
X	ReportSelectionUsage	Integer		

X	MailIsSent	Boolean
X	IsHandled	Boolean

OnBeforeGetRecipients

Subscribe to this event to control how recipients are found or to perform an action beforehand.

VAR	Parameter Name	Data Type	Subtype	Length
X	EMailTemplateHeader	Record	CDO E-Mail Template Header	
X	Recipients	Text		
X	Cc	Text		
X	Bcc	Text		
X	FilterRecord	RecordRef		
X	IsHandled	Boolean		

OnGetRecipients

Subscribe to this event to add or change the recipients on the e-mail. The existing recipients are separated by a semicolon (;).

VAR	Parameter Name	Data Type	Subtype	Length
X	EMailTemplateHeader	Record	CDO E-Mail Template Header	
X	Recipients	Text		
X	Cc	Text		
X	Bcc	Text		
X	FilterRecord	RecordRef		

```
[EventSubscriber(ObjectType::Codeunit, Codeunit::"CDO Events", 'OnGetRecipients', '',
false, false)]
local procedure OnGetRecipients(var EMailTemplateHeader: Record "CDO E-Mail Template
Header");
    var Recipients: Text; var Cc: Text; var Bcc: Text; var FilterRecord: RecordRef);
var
    Cust: Record Customer;
    SH: Record "Sales Header";
    SL: Record "Sales Line";
    Item: Record Item;

begin
    case FilterRecord.Number of
        Database::"Sales Header":
            begin
                FilterRecord.SetTable(SH);
                if Cust.Get(SH."Sell-to Customer No.") then
                    Recipients := DelChr(Cust.City, '=', ' ') + '@EventSample.com';

                if SH."Document Type" = SH."Document Type"::Order then begin
                    SL.SetRange("Document Type", SH."Document Type");
                    SL.SetRange("Document No.", SH."No.");
                    SL.SetRange(Type, SL.Type::Item);
                    SL.SetFilter("No.", '<>%1', '');
                    if SL.FindSet then
                        repeat
                            if Item.Get(SL."No.") then begin
                                Item.CalcFields("Assembly BOM");
                                if Item."Assembly BOM" then
                                    Bcc := 'Assembly@EventSample.com';
                            end;
                        until SL.Next = 0;
                    end;
                end;
            end;
    end;
end;
```

OnGetRecipientsFromTemplateLine

Subscribe to this event to add or change the recipients on the e-mail. The existing recipients are separated by a semicolon (;).

VAR	Parameter Name	Data Type	Subtype	Length
X	EMailTemplateLine	Record	CDO E-Mail Template Line	
X	Recipients	Text		
X	Cc	Text		
X	Bcc	Text		
X	FilterRecord	RecordRef		

OnBeforeInsertSignature

Subscribe to this event if you want to append content to the mail body before signatures are inserted. Ensure to format your content according to the “FormatAsHtml” parameter. If you append images etc. you can use content ids and the CIDAttachment to add such content properly.

VAR	Parameter Name	Data Type	Subtype	Length
X	EMailTemplateLine	Record	CDO E-Mail Template Line	
	MailBody	Text		
	FirstToContactNo	Code		20
X	FilterRecord	RecordRef		
	FormatAsHtml	Boolean		
X	CIDAttachment	Record	CDO E-Mail Template Attachment	

OnAttachFilesToMail

Subscribe to this event to modify existing attached files and add more attachments to the e-mail. Files must be added to DOFile (temp. record) which also contain the files added by Document Output.

VAR	Parameter Name	Data Type	Subtype	Length
X	EMailTemplateLine	Record	CDO E-Mail Template Line	
X	DOFile	Record	CDO File	
X	FilterRecord	RecordRef		
X	VariantRecord	Variant		
	SMTP	Boolean		

Sample code

See the sample Add attachment(s) using event. (Create PDF with report ID).

OnPrepareMail

Subscribe to this event to modify an emails attachments (DOFile), subject or body.

VAR	Parameter Name	Data Type	Subtype	Length
X	E-MailTemplateLine	Record	CDO E-Mail Template Line	
X	DOFile	Record	CDO File	
X	FilterRecord	RecordRef		
	Recipients	Text		
	Cc	Text		
	Bcc	Text		
X	Subject	Text		
X	MailBody	Text		

OnBeforeSendMail (deprecated)

Subscribe to this event to modify an emails attachments (DOFile) before the mail is sent or if you want to send the email yourself (set `SendHandled = true`). Use `OnBeforeSendMailExt` instead as this is deprecated.

VAR	Parameter Name	Data Type	Subtype	Length
X	E-MailTemplateLine	Record	CDO E-Mail Template Line	
X	DOFile	Record	CDO File	
	FromAddress	Text		
	Recipients	Text		
	Cc	Text		
	Bcc	Text		
	Subject	Text		
	MailBody	Text		
X	SendHandled	Boolean		

OnBeforeSendMailExt

Subscribe to this event to modify an emails attachments (DOFile) before the mail is sent or if you want to send the email yourself (set `SendHandled = true`).

VAR	Parameter Name	Data Type	Subtype	Length
X	DOFile	Record	CDO File	
X	CIDAttachmentTemp	Record	CDO E-Mail Template Attachment	
	DOSMTPCode	Code		20
	FromName	Text		
	FromAddress	Text		
	ToRecipients	Text		
	CcRecipients	Text		
	BccRecipients	Text		
	Subject	Text		
	MailBody	Text		
	MailBodyIsHtmlFormatted	Boolean		
	Importance	Integer		
X	SendHandled	Boolean		

OnOutlookMailSent (FOB only)

Subscribe to this event to perform an action after an email has been sent with Outlook.

VAR	Parameter Name	Data Type	Subtype	Length
X	EMailTemplateLine	Record	CDO E-Mail Template Line	
	Recipients	Text		
	Cc	Text		
	Bcc	Text		
X	FilterRecord	RecordRef		

OnSMTPMailSent

Subscribe to this event to perform an action after an email has been sent. Please note that this event is not only called for mails sent with SMTP – but for ALL mails. The name is inherited from older DO versions.

VAR	Parameter Name	Data Type	Subtype	Length
X	EMailTemplateLine	Record	CDO E-Mail Template Line	
X	Recipients	Text		
X	Cc	Text		
X	Bcc	Text		
X	FilterRecord	RecordRef		

OnBeforeEDoc

Subscribe to this event if you want to handle electronic documents by yourself.

VAR	Parameter Name	Data Type	Subtype	Length
X	EMailTemplateLine	Record	CDO E-Mail Template Line	
X	EDocCode	Code		20
X	FilterRecord	RecordRef		
X	UpdateNoPrinted	Boolean		
X	LogXml	Boolean		
X	SendEDoc	Boolean		
X	IsHandled	Boolean		

OnAfterEDoc

Subscribe to this event to perform an action after an electronic document has been created.

VAR	Parameter Name	Data Type	Subtype	Length
X	EMailTemplateLine	Record	CDO E-Mail Template Line	
X	EDocCode	Code		20
X	FilterRecord	RecordRef		
X	UpdateNoPrinted	Boolean		
X	LogXml	Boolean		
X	SendEDoc	Boolean		

OnBeforePrint

Subscribe to this event if you e.g., want to handle the print job.

VAR	Parameter Name	Data Type	Subtype	Length
X	EMailTemplateLine	Record	CDO E-Mail Template Line	
X	ReportID	Integer		
X	FilterRecord	RecordRef		
X	VariantRecord	Variant		
X	ReportParameters	Text		
X	ShowPrintDialog	Boolean		
X	ReportSelectionUsage	Integer		
X	PrintHandled	Boolean		

OnAfterPrint

Subscribe to this event to perform an action after a document has been printed.

VAR	Parameter Name	Data Type	Subtype	Length
X	EMailTemplateLine	Record	CDO E-Mail Template Line	
X	ReportID	Integer		
X	FilterRecord	RecordRef		
X	VariantRecord	Variant		
X	ReportParameters	Text		
X	ShowPrintDialog	Boolean		
X	ReportSelectionUsage	Integer		

OnLogCreated

Subscribe to this event to perform an action after a log entry has been created.

VAR	Parameter Name	Data Type	Subtype	Length
X	EMailLog	Record	CDO E-Mail Log	

OnBeforeSaveDoc

Subscribe to this event to perform an action before a document is saved.

VAR	Parameter Name	Data Type	Subtype	Length
X	EMailTemplateLine	Record	CDO E-Mail Template Line	
X	ReportID	Integer		
X	FilterRecord	RecordRef		
X	VariantRecord	Variant		
X	ReportSelectionUsage	Integer		
X	SaveHandled	Boolean		

OnMergeFieldFind

Subscribe to this event to return custom values for a merge field. This event is called for each Merge Field and the value can be changed by modifying the Value parameter.

VAR	Parameter Name	Data Type	Subtype	Length
X	EMailTemplateMergeField	Record	CDO E-Mail Template MergeField	
X	FilterRecord	RecordRef		
	FirstMailToContactNo	Code		20
X	Value	Text		

Sample code

Insert Sales Lines as a HTML table in the email.

```
[EventSubscriber(ObjectType::Codeunit, Codeunit::"CDO Events", 'OnMergeFieldFind', '',
false, false)]
local procedure OnMergeFieldFind(var EMailTemplateMergeField: Record "CDO E-Mail
Template MergeField";
    var FilterRecord: RecordRef; FirstMailToContactNo: Code[20]; var Value: Text);
var
    SH: Record "Sales Header";
begin
    begin
        case EMailTemplateMergeField.Number of
            99: // Merge Field Number 99
                begin
                    case FilterRecord.Number of
                        database::"Sales Header":
                            begin
                                FilterRecord.SetTable(SH);
                                value := GetHtmlTable(sh)
                            end;
                        end;
                    end;
                end;
        end;
    end;
end;

local procedure GetHtmlTable(SH: Record "Sales Header") Html: Text;
var
    SL: Record "Sales Line";
begin
    SL.setrange("Document No.", SH."No.");
    SL.SetRange("Document Type", SH."Document Type");

    if SL.FindSet() then begin
        Html := '<table style="width:100%" border=1>';
        Html += '<tr>';
        Html += '    <td>Description</td>';
        Html += '    <td>Quantity</td>';
        Html += '    <td>Line Amount</td>';
        Html += ' </tr>';

        repeat
            Html += '<tr>';
            Html += StrSubstNo('<td>%1</td>', SL.Description);
            Html += StrSubstNo('<td>%1</td>', SL.Quantity);
            Html += StrSubstNo('<td>%1</td>', SL."Line Amount");
            Html += '</tr>';
        until SL.Next() = 0;
        Html += '</table>';
    end;
end;
```

OnPDFMerge

Subscribe to this event if you would like to handle PDF merging or perform additional actions before two documents are merged.

VAR	Parameter Name	Data Type	Subtype	Length
	PDFReadStream	InStream		
	PDFMergeReadStream	InStream		
	NewPDFWriteStream	OutStream		
X	MergeHandled	Boolean		

OnPDFSetBackground

Subscribe to this event if you would like to handle setting PDF backgrounds or perform additional actions before a background is being applied.

VAR	Parameter Name	Data Type	Subtype	Length
	PDFReadStream	InStream		
	PDFBackGroundReadStream	InStream		
	NewPDFWriteStream	OutStream		
	PreserveLinks	Boolean		
X	SetBackgroundHandled	Boolean		

OnPDFSetBackgroundWithFP

Subscribe to this event if you would like to handle setting PDF backgrounds (with a special background for the first page) or perform additional actions before a background is being applied.

VAR	Parameter Name	Data Type	Subtype	Length
	PDFReadStream	InStream		
	PDFBackGroundReadStream	InStream		
	FPPDFBackGroundReadStream	InStream		
	NewPDFWriteStream	OutStream		
X	SetBackgroundHandled	Boolean		

OnPDFSetBackgroundWithLP

Subscribe to this event if you would like to handle setting PDF backgrounds (with a special background for the last page) or perform additional actions before a background is being applied.

VAR	Parameter Name	Data Type	Subtype	Length
	PDFReadStream	InStream		
	PDFBackGroundReadStream	InStream		
	LPPDFBackGroundReadStream	InStream		
	NewPDFWriteStream	OutStream		
X	SetBackgroundHandled	Boolean		

OnPDFSetBackgroundWithFPandLP

Subscribe to this event if you would like to handle setting PDF backgrounds (with a special background for the first and last page) or perform additional actions before a background is being applied.

VAR	Parameter Name	Data Type	Subtype	Length
	PDFReadStream	InStream		
	PDFBackGroundReadStream	InStream		
	FPPDFBackGroundReadStream	InStream		
	LPPDFBackGroundReadStream	InStream		
	OnePageUseFirstPage	Boolean		
	NewPDFWriteStream	OutStream		
X	SetBackgroundHandled	Boolean		

OnPDFEmbed

Subscribe to this event if you would like to handle embedding files in a PDF, to add additional files to the resulting PDF or perform additional actions before files are embedded.

VAR	Parameter Name	Data Type	Subtype	Length
	PDFReadStream	InStream		
X	FilesToEmbed	Record	CDO File	
	NewPDFWriteStream	OutStream		
X	EmbedHandled	Boolean		

OnPDFDigitalSign

Subscribe to this event if you would like to handle digital signing of PDFs or perform additional actions before it is signed.

VAR	Parameter Name	Data Type	Subtype	Length
	PDFReadStream	InStream		
	CertificateStream	InStream		
	NewPDFWriteStream	OutStream		
	Password	Text		
	Reason	Text		
	Location	Text		
	ContactInfo	Text		
	SignerName	Text		
X	DigitalSignHandled	Boolean		

OnPasswordProtectPDF

Subscribe to this event if you would like to handle password protection PDF or perform additional actions before the PDF is password protected.

VAR	Parameter Name	Data Type	Subtype	Length
	PDFReadStream	InStream		
	Password	Text		
	NewPDFWriteStream	OutStream		
X	PasswordProtectionHandled	Boolean		

OnBeforeCreateDocument (deprecated)

Subscribe to this event to handle document creation (remember to add the document to DOFile if you handle it) or perform additional actions before a document is being created. Use OnBeforeCreateDocumentExt instead as this is deprecated.

VAR	Parameter Name	Data Type	Subtype	Length
X	ReportID	Integer		
X	ReportParameters	Text		
X	DocumentType	Integer		
X	DOFile	Record	CDO File	
X	FilterRecord	RecordRef		
X	IsHandled	Boolean		

OnBeforeCreateDocumentExt

Subscribe to this event to handle document creation (remember to add the document to DOFile if you handle it) or perform additional actions before a document is being created.

VAR	Parameter Name	Data Type	Subtype	Length
X	EMailTemplateLine	Record	CDO E-Mail Template Line	
X	ReportID	Integer		
X	ReportParameters	Text		
X	DocumentType	Integer		
X	DOFile	Record	CDO File	
X	FilterRecord	RecordRef		
X	IsHandled	Boolean		

OnBeforeDocumentIsProtected

Subscribe to this event to perform an action before a document is being either converted to PDF/A, password protected or digitally signed. You can also handle this by yourself if `IsHandled = true`.

VAR	Parameter Name	Data Type	Subtype	Length
X	DOFile	Record	CDO File	
X	FilterRecord	RecordRef		
X	EMailTemplateHeader	Record	CDO E-Mail Template Header	
X	EMailTemplateLine	Record	CDO E-Mail Template Line	
X	IsHandled	Boolean		

OnAfterCreateDocument

Subscribe to this event to perform additional actions after a document has been created.

VAR	Parameter Name	Data Type	Subtype	Length
X	DOFile	Record	CDO File	
X	FilterRecord	RecordRef		
X	EMailTemplateHeader	Record	CDO E-Mail Template Header	
X	EMailTemplateLine	Record	CDO E-Mail Template Line	

OnGetReportParameters

Subscribe to this event to change the parameter for the request page or to prevent the request page to be shown for specific documents (or vice versa).

VAR	Parameter Name	Data Type	Subtype	Length
X	ReportID	Integer		
X	FilterRecord	RecordRef		
X	ShowRequestPage	Boolean		
X	ReportParameters	Text		
X	IsHandled	Boolean		

OnFindReportID

Subscribe to this event to return another report id for a specific table.

VAR	Parameter Name	Data Type	Subtype	Length
X	ReportID	Integer		
X	FilterRecord	RecordRef		
X	IsHandled	Boolean		

OnGetReportSelection

VAR	Parameter Name	Data Type	Subtype	Length
X	ReportID	Integer		
X	NoOfRec	Integer		
X	UsageAsText	Text		

OnGetReportIDFromTable

VAR	Parameter Name	Data Type	Subtype	Length
X	CustomReportID	Integer		
X	RecRef	RecordRef		

OnGetReportSelectionFromTable

Subscribe to this event to get a custom or standard report selection usage for e.g. a custom table.

VAR	Parameter Name	Data Type	Subtype	Length
X	RecRef	RecordRef		
X	UsageAsInt	Integer		
X	IsHandled	Boolean		

OnSetRecipientsSetCustomFilter

VAR	Parameter Name	Data Type	Subtype	Length
X	FRef	FieldRef		
X	EMailRecipient	Record	CDO E-Mail Recipient	
X	IsHandled	Boolean		

OnEMailRecipientsFieldOnLookupSetFilter

VAR	Parameter Name	Data Type	Subtype	Length
X	EMailTemplateHeader	Record	CDO E-Mail Template Header	
X	Field	Record	Field	
X	IsHandled	Boolean		

OnGetLanguageCodeFieldNo

Subscribe to this event to return a language code field number for a custom table.

VAR	Parameter Name	Data Type	Subtype	Length
X	RecRef	RecordRef		
X	LanguageCodeFieldNo	Integer		
X	IsHandled	Boolean		

OnGetVariantRecord

Subscribe to this event to return a variant for a custom table. This is needed for email jobs as a variant record cannot be assigned to a record reference.

VAR	Parameter Name	Data Type	Subtype	Length
	TableNo	Integer	CDO File	
X	VariantRecord	Variant		
X	IsHandled	Boolean		

Sample code:

All custom tables that must be handled must be implemented in this event.

```
[EventSubscriber(ObjectType::Codeunit, Codeunit::"CDO Events", 'OnGetVariantRecord',
', true, true)]
procedure OnGetVariantRecord(TableNo: Integer; var VariantRecord: Variant; var
IsHandled: Boolean);
var
    TeamSalesperson: Record "Team Salesperson";
begin
    Case TableNo of
        Database::"Team Salesperson":
            begin
                VariantRecord := TeamSalesperson;
                IsHandled := true;
            end;
    End;
end;
```

OnBeforePostAndHandleSalesHeader

VAR	Parameter Name	Data Type	Subtype	Length
X	SalesHeader	Record	Sales Header	
X	IsHandled	Boolean		

OnBeforeSendPostAndHandleSalesHeader

VAR	Parameter Name	Data Type	Subtype	Length
X	SalesHeader	Record	Sales Header	
X	IsHandled	Boolean		

OnBeforeSendPostAndHandleSalesShipmentHeader

VAR	Parameter Name	Data Type	Subtype	Length
X	SalesShipmentHeader	Record	Sales Shipment Header	
X	IsHandled	Boolean		

OnBeforeSendPostAndHandleSalesInvoiceHeader

VAR	Parameter Name	Data Type	Subtype	Length
X	SalesInvoiceHeader	Record	Sales Invoice Header	
X	IsHandled	Boolean		

OnBeforeSendPostAndHandleSalesCrMemoHeader

VAR	Parameter Name	Data Type	Subtype	Length
X	SalesCrMemoHeader	Record	Sales Cr.Memo Header	
X	IsHandled	Boolean		

OnBeforeSendPostAndHandleReturnReceiptHeader

VAR	Parameter Name	Data Type	Subtype	Length
X	ReturnReceiptHeader	Record	Return Receipt Heade	
X	IsHandled	Boolean		

OnBeforePostAndHandlePurchHeader

VAR	Parameter Name	Data Type	Subtype	Length
X	PurchaseHeader	Record	Purchase Header	
X	IsHandled	Boolean		

OnBeforeSendPostAndHandlePurchRcptHeader

VAR	Parameter Name	Data Type	Subtype	Length
X	PurchRcptHeader	Record	Purch. Rcpt. Header	
X	IsHandled	Boolean		

OnBeforeSendPostAndHandlePurchInvoiceHeader

VAR	Parameter Name	Data Type	Subtype	Length
X	PurchaseInvoiceHeader	Record	Purch. Inv. Header	
X	IsHandled	Boolean		

OnBeforeSendPostAndHandlePurchCrMemoHeader

VAR	Parameter Name	Data Type	Subtype	Length
X	PurchCrMemoHeader	Record	Purch. Cr. Memo Hdr.	
X	IsHandled	Boolean		

OnBeforeSendPostAndHandlePurchShipmentHeader

VAR	Parameter Name	Data Type	Subtype	Length
X	ReturnShipmentHeader	Record	Return Shipment Header	
X	IsHandled	Boolean		

OnBeforePostAndHandleServiceHeader

VAR	Parameter Name	Data Type	Subtype	Length
X	ServiceHeader	Record	Service Header	
X	IsHandled	Boolean		

OnBeforeSendPostAndHandleServiceShipmentHeader

VAR	Parameter Name	Data Type	Subtype	Length
X	ServiceShipmentHeader	Record	Service Shipment Header	
X	IsHandled	Boolean		

OnBeforeSendPostAndHandleServiceInvoiceHeader

VAR	Parameter Name	Data Type	Subtype	Length
X	ServiceInvoiceHeader	Record	Service Invoice Header	
X	IsHandled	Boolean		

OnBeforeSendPostAndHandleServiceCrMemoHeader

VAR	Parameter Name	Data Type	Subtype	Length
X	ServiceCrMemoHeader	Record	Service Cr.Memo Header	
X	IsHandled	Boolean		

SetReportSelectionGroup (page 6175403 "CDO Report Selection Usage")

Subscribe to this event to insert text and number for a custom report selection usage. Please note that this BusinessEvent has the sender included.

VAR	Parameter Name	Data Type	Subtype	Length
	UsageGroup	Enum	CDOUsageGroup	

OnImportServerFile (Table 6175296 "CDO Temp Blob", OnPrem only)

This event is used by Document Output OnPremise to handle physical file import. Please note that this BusinessEvent has the sender included.

VAR	Parameter Name	Data Type	Subtype	Length
	ServerFileName	Text		
X	IsHandled	Boolean		

OnExportServerFile (Table 6175296 "CDO Temp Blob", OnPrem only)

This event is used by Document Output OnPremise to handle physical file export. Please note that this BusinessEvent has the sender included.

VAR	Parameter Name	Data Type	Subtype	Length
	ServerFileName	Text		
	Overwrite	Boolean		
X	IsHandled	Boolean		

OnImportServerFile (Table 6175301 "CDO File")

This event is used by Document Output OnPremise to handle physical file import. Please note that this BusinessEvent has the sender included.

VAR	Parameter Name	Data Type	Subtype	Length
	ServerFileName	Text		
X	IsHandled	Boolean		

OnExportServerFile (Table 6175301 "CDO File")

This event is used by Document Output OnPremise to handle physical file export. Please note that this BusinessEvent has the sender included.

VAR	Parameter Name	Data Type	Subtype	Length
	ServerFileName	Text		
	Overwrite	Boolean		
X	IsHandled	Boolean		

Pages

Object ID	Name	OnPrem Only
6175271	CDO E-Mail Template List	
6175272	CDO E-Mail Templates	
6175273	CDO E-Mail Recipients	
6175274	CDO E-Mail Template Attachment	
6175275	CDO E-MailTemplateMergeFields	
6175276	CDO E-Mail Template Card	
6175277	CDO E-Mail Log	
6175278	CDO E-Mail Template Groups	
6175280	CDO Customer Card	
6175281	CDO Azure Application Setup	
6175284	CDO E-Mail/Print Statement	
6175285	CDO UnhandledPostedSalesShipt.	
6175286	CDO UnhandledPostedSalesInv.	
6175287	CDO Unhandled Posted Cr. Memo	
6175288	CDO UnhandledPostedReturnRec.	
6175289	CDO Unhandled Issued Reminders	
6175290	CDO UnhandledIss.FinChrgMemos	
6175291	CDO Setup	
6175292	CDO About	
6175293	CDO SMTP Setup L.	X
6175294	CDO E-Mail Jobs	
6175295	CDO Setup Wizard	
6175296	CDO SMTP Setup	X
6175297	CDO Queue Entry	
6175298	CDO Setup Wizard User Setup	
6175300	CDO Role Center	
6175301	CDO Unhandled	
6175302	CDO E-Mail Templates ListPart	
6175303	CDO Components	X (v14 only)
6175304	CDO Statement RequestPageSetup	X (v14 only)
6175305	CDO Vendor Remittance Advice	
6175306	CDO E-Mail Template Lines	
6175310	CDO UnhandledPostedServiceShip	
6175311	CDO UnhandledPostedServiceInv.	
6175312	CDO UnhandledPostedServiceCrM.	
6175313	CDO Page Setup	X (v14 RTC only)
6175314	CDO E-Mail Log FactBox	
6175315	CDO NAV Objects	
6175316	CDO Fields (With Relation)	
6175317	CDO Send Customer Statements	
6175318	CDO Customer Setup List	
6175319	CDO Field List	
6175320	CDO Customer Statement Journal	
6175321	CDO E-MailTemplateImportWorksh	
6175322	CDO E-Mail Recipient Templates	
6175323	CDO Cust.Template Setup	

6175324	CDO Customer FactBox	
6175325	CDO Customer Setup Card	
6175326	CDO Sales Order Actions	
6175327	CDO Sales Invoice Actions	
6175328	CDO Sales Credit Memo Actions	
6175329	CDO Sales Return Order Actions	
6175330	CDO E-Mail Template Edit HTML	X (v14 only)
6175331	CDO E-MailTemplateAttachm.Part	
6175332	CDO E-Mail Template Mail Part	
6175333	CDO File (dll)	X (v14 only)
6175334	CDO Service Tiers	X (version 18 and later required OnPrem app)
6175335	CDO Sales Quote Actions	
6175336	CDO Posted Sales Ship. Actions	
6175337	CDO Posted Sales Inv. Actions	
6175338	CDO Posted Sales Cr.Memo Act.	
6175340	CDO Posted Return Receipt Act.	
6175341	CDO Issued Reminder Actions	
6175342	CDO Issued Fin.Ch.Memo Actions	
6175343	CDO E-Mail	
6175344	CDO E-Mail Attachments	
6175345	CDO Reminder Actions	
6175346	CDO Fin. Charge Memo Actions	
6175347	CDO Service Quote Actions	
6175348	CDO Service Order Actions	
6175349	CDO Service Invoice Actions	
6175350	CDO Service Cr.Memo Actions	
6175351	CDO Posted Serv. Ship. Actions	
6175352	CDO Posted Serv. Inv. Actions	
6175353	CDO Posted Serv. Cr.M. Actions	
6175354	CDO Service Contract Actions	
6175355	CDO Purchase Quote Actions	
6175356	CDO Purchase Order Actions	
6175357	CDO Whse. Sales Order Actions	
6175358	CDO Whse. Sales Ret.O. Actions	
6175359	CDO Whse. Invent. Pick Actions	
6175360	CDO Whse. Shipment Actions	
6175361	CDO Whse. Pick/Put-Awy Actions	
6175362	CDO Whse. Purch. Order Actions	
6175363	CDO Whse. P. Ret.Order Actions	
6175364	CDO Whse. Inv.Put-Awy. Actions	
6175365	CDO Whse. Receipt Actions	
6175366	CDO Job Actions	
6175367	CDO Unhandled Sales Quote	
6175368	CDO Unhandled Sales Order	
6175369	CDO Unhandled Sales Invoice	
6175370	CDO Unhandled Purchase Quote	
6175371	CDO Unhandled Purchase Order	
6175372	CDO Unhandled Purchase Invoice	
6175373	CDO Edit HTML E-Mail template	

6175374	CDO Merge Field FactBox
6175376	CDO E-Mail Attachments Rec
6175377	CDO Vendor FactBox
6175378	CDO Vendor Setup List
6175379	CDO Vendor Setup Card
6175380	CDO Vendor Template Setup
6175381	CDO Unhandled RemittanceAdvice
6175382	CDO E-Mail Signature List
6175383	CDO E-Mail Signature Card
6175384	CDO Signature FactBox
6175385	CDO E-Mail Signature Filter
6175386	CDO E-Document Send Codes
6175387	CDO E-Document Send Code Card
6175388	CDO Send Codes
6175389	CDO Local Print Service Part
6175390	CDO Printer Selections
6175391	CDO Printer List
6175392	CDO Printer Dialog
6175393	CDO Local Print Service Status
6175394	CDO Print queue
6175395	CDO File Download Queue
6175396	CDO CDN E-Doc Send Code part
6175397	CDO From E-Mail Address
6175398	CDO Sales BlanketOrder Actions
6175399	CDO Purch. BlanketOrderActions
6175400	CDO E-Mail Accounts
6175401	CDO Download Country Template
6175402	CDO Sig. Merge Field FactBox
6175403	CDO Report Selection Usage
6175404	CDO Purchase Ret.Order Actions
6175405	CDO Posted P. Receipt Actions
6175406	CDO Posted Purch. Inv. Actions
6175407	CDO Posted Purch. Cr.Memo Act.
6175408	CDO Posted P. Ret. Ship. Act.
6175409	CDO E-Mail Templ. Line Reports
6175410	CDO Unhandled Purchase
6175411	CDO Page - Default Filters
6175412	CDO Connected Services
6175413	CDO Connected Services List
6175414	CDO Inforation Card Part
6175415	CDO Service Printer List
6175416	CDO Print. Sel. Printer List
6175417	CDO Print. Sel. Local Part
6175418	CDO Prt. Sel. Svc. Print Part
6175419	CDO Custom Input

Reports

6175271 CDO Copy E-Mail Template

Used to copy E-Mail templates, can be copied across companies.

6175272 CDO Create PDF files

Used to create PDF files, when you have used “Document Folder” on the “E-Mail template” or in “Document Output Setup”.

6175273 CDO UpdateE-MailLog(Ver. 1.39)

Sets the new fields in “E-Mail Log” "Primary Key Field 1 No.", "Primary Key Field 1 Value", "Primary Key Field 2 No." and "Primary Key Field 2 Value".

6175274 CDO CreateCustomerE-MailRecip.

Creates new e-mail recipient from a field on Customer. Default field 102 E-Mail.

6175275 Create Vendor E-Mail recip.

Creates new e-mail recipient from a field on Vendor. Default field 102 E-Mail.

6175277 CDO Update Customer Setup

Updates **Fejl! Henvisningskilde ikke fundet.** with “Automatic Statement” and “Send statement code”

6175278 CDO CopyE-MailFromDoc.layout

Copies e-mail addresses from Document Layout to E-Mail Recipient in Document Output.

Codeunits

6175271 CDO Printer Management

Used to change the Printer to a PDF printer in Codeunit 1.

6175272 CDO Document E-Mail Management

Handling the PDF generating and sending from:

- Sales Shipment Header
- Sales Invoice Header
- Sales Credit Memo Header
- Return Receipt Header
- Issued Reminder Header
- Issued Finance Charge Memo Header
- Service Shipment Header
- Service Invoice Header
- Service Credit Memo Header

6175273 CDO Document-Print Functions

Used in Codeunit 82 “Sales-Post + Print” to print or e-mail documents.

6175274 CDO Continia Online PDF Mgt.

Used to perform PDF modifications in versions where DLLs can't be used.

6175275 CDO dll PDF Management

Used to perform PDF modifications in versions where DLLs can be used. Available in BC version 14, 15, 16 and 17.

6175276 CDO E-Mail Management

Used to find recipients for:

- Customer / Statements
- Sales Shipment Header
- Sales Invoice Header
- Sales Credit Memo Header
- Return Receipt Header
- Issued Reminder Header
- Issued Finance Charge Memo Header
- Service Shipment Header
- Service Invoice Header
- Service Credit Memo Header

6175277 CDO .Net SMTP Management

Uses the .Net System.Net.Mail.MailMessage to create and send html mails.

6175278 CDO E-MailTemplateImportExport

Used to import or export E-mail templates as xml files.

6175279 CDO Outlook Management

Handling Outlook control.

Uses Outlook and Word.

Used for both editing the e-mail template and generating new mails.

6175280 CDO Print to File

Used to generate PDF's.

It can generate PDF's with Continia PDF or NAV's built in PDF.

6175281 CDO SMTP Management

Used to generate a SMTP mail from an E-Mail template.

6175282 CDO Merge Field Value Finder

Codeunit to find Merge Field values with parameter.

6175283 CDO NAV App.ServerE-MailJobMgt

The Codeunit that executes all the e-mail jobs. Typically used with a Job Queue Entry.

6175284 CDO BLOB Management

Handling BLOB to/from file.

6175285 CDO Open Documents

Generating zip file with open documents for Statements, Reminders and Finance Charges.

6175286 CDO Queue Mangement

Handling e-mail queue entries, including handling errors.

6175287 CDO ContiniaPDF Management

Used to generate PDF's with the Continia PDF printer driver.

6175288 CDO Data Upgrade

6175289 CDO Upgrade to 1.36 - Step 1

First step of upgrading from versions before 1.36

6175290 CDO Upgrade to 1.36 - Final

Final step of upgrading from version before 1.36.

6175291 CDO Create Roles

Creating Roles for Document Output. Only available in version 14 (RTC). In app versions are roles created in another way.

6175292 CDO Standard NAV Actions

Handling Events when sending with standard NAV actions. Only available in version 14 (RTC).

6175293 CDO Download and Create AddIns

6175294 CDO Table Field Array Mgt.

6175295 CDO Recipient Mgt.

6175296 CDO E-Mail Template Mangement

6175297 CDO Send Cust. Statement Mgt.

6175298 CDO Events

All event functions are in this codeunit.

6175299 CDO Functions

6175300 Doc. Output Ver. 2.0 Convert

Converts templates from version 1.x to version 2.x

6175301 CDO Sales-Post and Handle

6175303 CDO E-Mail Handler

6175304 CDO Continia Performance Mgt.

6175305 CDO Issue Document

6175306 CDO Mail Management

6175307 CDO Electronic Document Mgt.

6175308 CDO Web Service E-Mail Log

6175309 CDO Outlook on NST Management
Only available in version 14 (RTC).

6175310 CDO Subscribers

6175311 CDO E-Document Response

6175312 CDO Unhandled Sales Pages Mgt.

6175313 CDO UnhandledPurchasePagesMgt.

6175314 CDO UnhandledServicePagesMgt.

6175315 CDO Remittance Mangement

6175317 CDO Core Event Handler

6175318 CDO Show E-MailPrint Statement

6175319 CDO Log Management

6175320 CDO String Functions

6175321 CDO Usage Management

6175322 CDO Http Management

6175323 CDO Xml Document

6175324 CDO Xml Node

6175325 CDO Xml Node List

6175326 CDO Xml Management

6175327 CDO E-mail Sign. Import Export

6175328 CDO Conversion

6175329 CDO Print Web Service

6175330 CDO File Download Web Service

6175331 CDO Open Unhandled Sales Quote

6175332 CDO Open Unhandled Sales Order

6175333 CDO Open Unhandled Sales Inv.

6175334 CDO CDN Proxy Implementation

6175335 CDO Send Mail Management

6175337 CDO Setup Management

Only available in app versions.

6175338 CDO Setup Data

6175339 CDO Convert to Output Profile

6175342 CDO Install

Only available in BC version 17 or later.

6175343 CDO Microsoft Graph Rest Api

6175344 CDO Mail Message Builder

6175345 CDO OAuth Management

6175346 CDO Json Web Token (JWT) Mgt.

6175347 CDO JSON Management

6175348 CDO Json Writer

6175349 CDO App Notification Subscr

6175350 CDO Purch.-Post and Handle

6175351 CDO Service-Post and Handle

6175352 CDO Azure Blob Storage

6175353 CDO Connected Services Handler

Only available in app versions.

.Net components

Continia.DocumentOutput.PDF.dll

Purpose:

Add background/watermark and merge PDF files.

Used in Codeunit 6175280 Print to File

Methods:

- setPDFBackground (Sets the background/watermark on all pages in a PDF file)
- addPages (adds one PDF file to another PDF file)
- GetNoOfPages (returns the number of pages in a PDF file)
- PrintPDF (Print the PDF file)
- DigitalSign (Signs the PDF with a certificate)
- Embedfile (Embeds a file to the PDF)

GdPicture

The GdPicture components are used by Continia.DocumentOutput.PDF.dll

- GdPicture.NET.14.dll
- GdPicture.NET.14.image.gdimgplug.64.dll
- GdPicture.NET.14.image.gdimgplug.dll
- GdPicture.NET.14.PDF.dll

Continia.DocumentOutput.Outlook.dll (FOB only)

Use Document Output Monitor instead! Uses Web Service to insert E-Mail Log from Outlook

Purpose:

Track if the opened mail in Outlook is sent.

If the mail is sent, the mail is added to the log.

Used in Codeunit 6175279 CDO Outlook Management

Methods:

- SetOutlook
- MailSent

Properties:

- To
- CC
- BCC

Microsoft Outlook (FOB only)

The Outlook files are to make sure NAV can control Outlook.

Used in Codeunit 6175279 Outlook Management

- Microsoft.Office.Interop.Outlook.dll
- Microsoft.Office.Interop.OutlookViewCtl.dll