



Continia

Document Output

Continia Document Output 365

Developers Guide

August 2021 - CDO 5.0

Table of contents

- 1. Introduction..... 6**
- 2. Design 6**
 - Print and send e-mails:..... 6
 - Generating PDF's: 6
- 3. Data Model..... 7**
 - Table 6175271 CDO E-Mail Template 8
 - Table 6175272 CDO E-Mail Recipient 9
 - Table 6175273 CDO E-Mail Log 10
 - Table 6175274 CDO E-Mail Template Attachment..... 11
 - Table 6175275 CDO E-Mail Template MergeField..... 11
 - Table 6175276 CDO Document Group..... 11
 - Table 6175277 CDO E-Mail Codeunit Parameter 12
 - Table 6175278 CDO SMTP Setup 12
 - Table 6175279 CDO Statement Req. Page Setup 12
 - Table 6175280 CDO E-Mail Job..... 13
 - Table 6175281 CDO Setup..... 13
 - Table 6175282 CDO Queue Entry 14
 - Table 6175283 CDO E-Mail Template Header 15
 - Table 6175284 CDO E-Mail Template Line 16
 - Table 6175285 CDO Send Customer Statement..... 17
 - Table 6175286 CDO Customer Setup..... 17
 - Table 6175287 CDO Statement Journal Line 17
 - Table 6175288 CDO Object Stub 18
 - Table 6175289 CDO E-Mail Templ.Imp.Worksht.L 18
 - Table 6175290 CDO E-Mail Recipient Template..... 18
 - Table 6175291 CDO Cust.Template Setup 19
 - Table 6175292 CDO Page - Default filter..... 19
 - Table 6175293 CDO File (dll) 19
- 4. Useful functions..... 20**
 - Table 6175284 E-Mail Template Line 20
 - FindTemplate with ReportID, LanguageCode and RecordRef 20
 - Open Record/PDF In Outlook 20
 - Send Record/PDF with SMTP Mail 20
 - Send record/PDF to Queue 21

- Recipients Is Empty 21
- Get Recipients, To, Cc and Bcc..... 21
- Create Button to open mail in Outlook with new table and new report. 22
- Create Button to send mail with SMTP with new table and new report..... 22
- Create Button to put e-mail in e-mail queue with new table and new report. 22
- Create new Merge Field Finder (Codeunit)..... 23
- 5. Events 24**
 - OnFindTemplateWithCode..... 24
 - OnFindTemplateWithReportID..... 24
 - Change From E-Mail Address - OnGetFromEMailAddress 24
 - Change recipients - OnGetRecipients 24
 - Before attachments are added to mail - OnAttachFilesToMail..... 26
 - OnOutlookMailSent 28
 - OnSMTPMailSent 28
 - OnBeforePrint..... 28
 - OnMergeFieldFind 29
- 6. Pages 30**
- 7. Reports 32**
 - Report 6175271 CDO Copy E-Mail Template 32
 - Report 6175272 CDO Create PDF files 32
 - Report 6175273 CDO UpdateE-MailLog(Ver. 1.39) 32
 - Report 6175274 CDO CreateCustomerE-MailRecip..... 32
 - Report 6175275 Create Vendor E-Mail recip. 32
 - Report 6175277 CDO Update Customer Setup 32
 - Report 6175278 CDO CopyE-MailFromDoc.layout..... 32
- 8. Codeunits..... 33**
 - 6175271 CDO Printer Management..... 33
 - 6175272 CDO Document E-Mail Management 33
 - 6175273 CDO Document-Print Functions 33
 - 6175276 CDO E-Mail Management 33
 - 6175277 CDO .Net SMTP Management..... 33
 - 6175278 CDO E-MailTemplateImportExport..... 33
 - 6175279 CDO Outlook Management..... 33
 - 6175280 CDO Print to File 33
 - 6175281 CDO SMTP Mangement 34

6175282 CDO Merge Field Value Finder	34
6175283 CDO NAV App.ServerE-MailJobMgt.....	34
6175284 CDO BLOB Management	34
6175285 CDO Open Documents	34
6175286 CDO Queue Mangement.....	34
6175287 CDO ContiniaPDF Management	34
6175289 CDO Upgrade to 1.36 - Step 1	34
6175290 CDO Upgrade to 1.36 - Final.....	34
6175291 CDO Create Roles	34
6175292 CDO Stdandard NAV Actions	34
Codeunit 6175293 CDO Download and Create AddIns.....	34
Codeunit 6175294 CDO Table Field Array Mgt.....	34
Codeunit 6175295 CDO Recipient Mgt.	34
Codeunit 6175296 CDO E-Mail Template Mangement.....	34
Codeunit 6175297 CDO Send Cust. Statement Mgt.	34
Codeunit 6175298 CDO Events.....	34
Codeunit 6175299 CDO Functions	34
Codeunit 6175300 Doc. Output Ver. 2.0 Convert.....	35
Codeunit 6175301 CDO Sales-Post and Handle.....	35
Codeunit 6175303 CDO E-Mail Handler	35
Codeunit 6175304 CDO Continia Performance Mgt.	35
Codeunit 6175305 CDO Issue Document	35
Codeunit 6175306 CDO Mail Mangement	35
Codeunit 6175307 CDO Electronic Document Mgt.	35
Codeunit 6175308 CDO Web Service E-Mail Log.....	35
Codeunit 6175310 CDO Subscribers	35
Codeunit 6175312 CDO Unhandled Sales Pages Mgt.	35
Codeunit 6175313 CDO UnhandledPurchasePagesMgt.	35
Codeunit 6175314 CDO UnhandledServicePagesMgt.	35
Codeunit 6175315 CDO Remittance Mangement	35
Codeunit 6175317 CDO Core Event Handler.....	35
9. Modified standard objects (NAV 2018)	35
Table 77 Report Selections	35
Pages	35
10. .Net components	36
Continia.DocumentOutput.PDF.dll	36

GdPicture.....	36
Continia.DocumentOutput.Outlook.dll (FOB Versions only).....	36
Microsoft Outlook (FOB Versions only).....	36

1. Introduction

Document Output is an add-on for Microsoft Business Central that enables you to send Documents as attached PDF with an E-Mail Template for each document type.

This manual introduces you to the basic development issues.

2. Design

Print and send e-mails:

Everything that needs to be printed or send as PDF with mail is done with an “E-Mail Template Header” or “E-Mail Template Line” (Tables). The “E-Mail Template Line” table has functions to generate PDF and send the PDF with e-mail. See [Useful functions](#)

Generating PDF's:

All PDF's is generated with the Codeunit 6175280 “Document-Print Functions”

3. Data Model

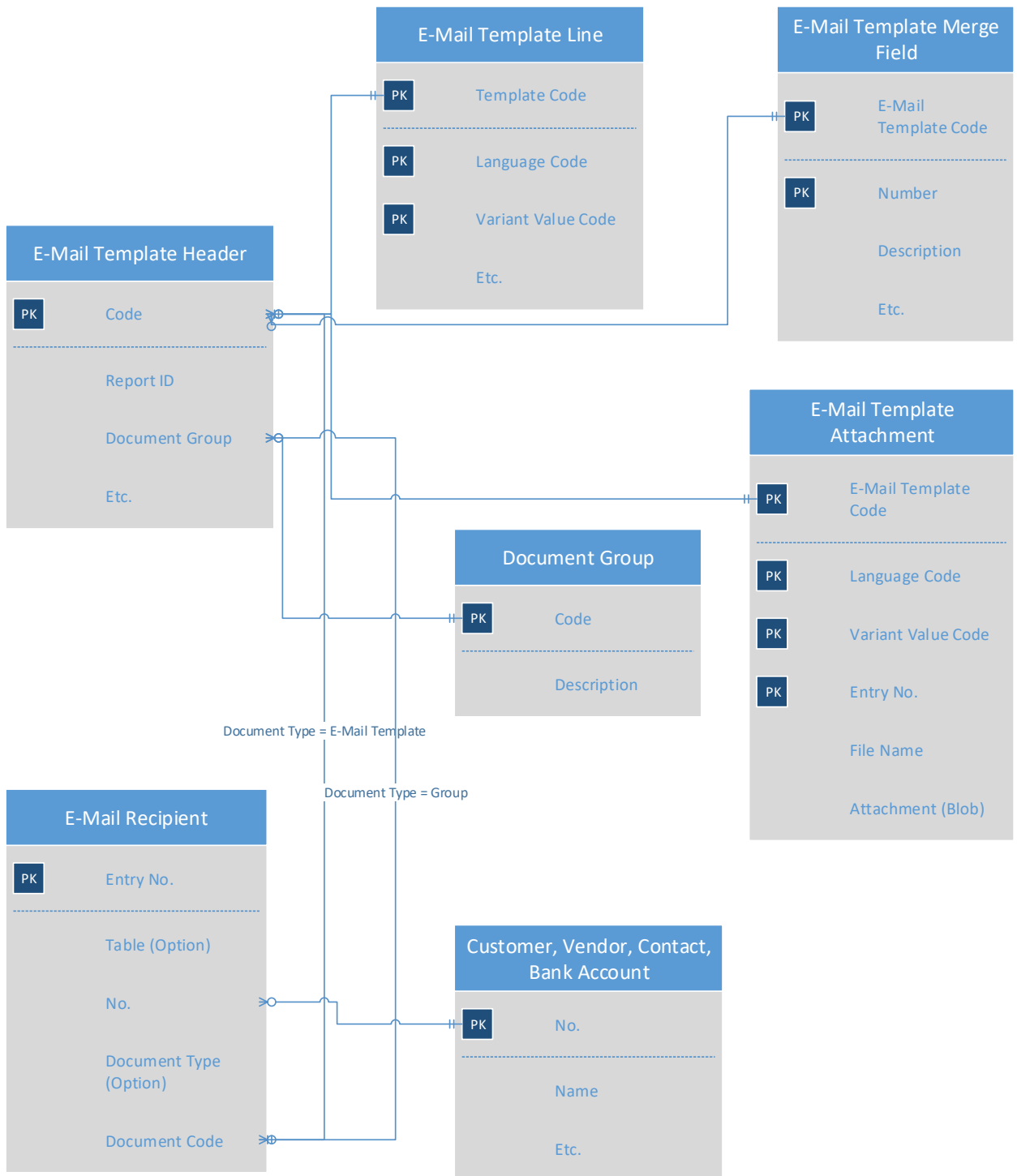


Table 6175271 CDO E-Mail Template

Field No.	Field Name	Data Type	Length
1	Code	Code	20
2	Report-ID	Integer	
3	Report Name	Text	30
4	Language Code	Code	10
5	Engine	Option	
6	Printer Name	Text	250
7	File Name	Text	250
8	To E-Mail Link Table No.	Integer	
9	To E-Mail Link Field Type	Option	
10	To E-Mail Link Field No.	Integer	
11	To E-Mail Link Table Name	Text	30
12	To E-Mail Link Field Name	Text	30
14	E-Mail is Mandatory	Boolean	
15	Enabled	Boolean	
18	Test Recipient	Text	80
20	Subject Template	BLOB	
21	E-Mail Template (Web Archive)	BLOB	
22	E-Mail Template (HTML)	BLOB	
30	Mail Format	Option	
32	Use Outlook Signature	Boolean	
33	Mail Importance	Option	
34	From E-Mail Address	Text	250
36	Fixed Cc Recipient(s)	Text	250
37	Fixed Bcc Recipient(s)	Text	250
39	SMTP Server	Code	10
40	Log E-Mails	Boolean	
44	Attach Open Documents	Boolean	
45	Attach Open Doc. File Name	Text	250
50	Document Group	Code	20
60	Document Folder	Text	250
61	Do Not Save to Document Folder	Boolean	
70	Use Doc. Output in Std. NAV	Option	
100	Background PDF File Name	Text	250
101	Background PDF	BLOB	
104	Merge PDF	BLOB	

Table 6175272 CDO E-Mail Recipient

Field No.	Field Name	Data Type	Length
1	Table	Option	
2	No.	Code	20
3	Document Type	Option	
4	Document Code	Code	20
5	Recipient Type	Option	
6	E-Mail Type	Option	
7	Contact No.	Code	20
8	Contact Name	Text	50
9	Contact Company No.	Code	20
10	E-Mail	Text	80
11	Entry No.	Integer	
15	Contact E-Mail	Text	80
20	Do not Attach Open Documents	Boolean	

Table 6175273 CDO E-Mail Log

Field No.	Field Name	Data Type	Length
1	Entry No.	Integer	
2	E-Mail Template Code	Code	20
3	Language Code	Code	10
4	User ID	Code	50
5	Date Time	DateTime	
6	Report-ID	Integer	
7	Record ID	RecordID	
8	Table No.	Integer	
9	Filter	Text	250
10	To	Text	250
11	Cc	Text	250
12	Bcc	Text	250
13	Linked to Table	Option	
14	Linked to Code	Code	20
15	Dimension Code	Code	20
16	Template Variant Value Code	Code	20
20	E-Mail	BLOB	
21	File Name	Text	250
22	Sent with	Option	
24	SMTP Server	Code	10
33	Primary Key Field 1 No.	Integer	
34	Primary Key Field 1 Name	Text	80
35	Primary Key Field 1 Value	Text	50
36	Primary Key Field 2 No.	Integer	
37	Primary Key Field 2 Name	Text	80
38	Primary Key Field 2 Value	Text	50
50	To BLOB	BLOB	
51	Cc BLOB	BLOB	
52	Bcc BLOB	BLOB	
56	Filter BLOB	BLOB	

Table 6175274 CDO E-Mail Template Attachment

Field No.	Field Name	Data Type	Length
1	E-Mail Template Code	Code	20
2	Language Code	Code	10
3	Entry No.	Integer	
4	Attachment	BLOB	
5	File Name	Text	250
6	Template Type	Option	
7	Content Type	Text	30
8	CID	Text	250
9	Variant Value Code	Code	20
10	Template Variant Field No.	Integer	
12	Dimension Code	Code	20

Table 6175275 CDO E-Mail Template MergeField

Field No.	Field Name	Data Type	Length
1	E-Mail Template Code	Code	20
5	Number	Integer	
6	Description	Text	50
7	Get Field From	Option	
10	Get From Table No.	Integer	
11	Get From Field No.	Integer	
12	Get From Table Name	Text	30
13	Get From Field Name	Text	30
14	Get From Field Caption	Text	80
16	Codeunit ID	Integer	
17	Codeunit Parameter	Text	50
20	Type	Option	
21	Web Address	Text	250
22	Show Text	Text	80
30	Value From Table Field Array	Text	140

Table 6175276 CDO Document Group

Field No.	Field Name	Data Type	Length
1	Code	Code	20
2	Description	Text	50

Table 6175277 CDO E-Mail Codeunit Parameter

Field No.	Field Name	Data Type	Length
1	Table No.	Integer	
2	Position	Text	250
3	Template Code	Code	20
4	Language Code	Code	10
5	ReturnValue	Text	250
6	Parameter	Text	50
7	View	Text	250
8	Contact No.	Code	20

Table 6175278 CDO SMTP Setup

Field No.	Field Name	Data Type	Length
1	Code	Code	10
2	SMTP Server Address	Text	250
3	Authentication	Option	
4	User ID	Text	80
5	Password	Text	80
6	Use SSL	Boolean	
7	Port	Integer	
8	Connection Timeout (sec)	Integer	
9	From E-Mail Address	Text	80
10	From E-Mail Name	Text	50
20	Max. no. of mails per minute	Integer	

Table 6175279 CDO Statement Req. Page Setup

Field No.	Field Name	Data Type	Length
1	Primary Key	Code	10
2	Print Entries Due	Boolean	
3	Print All Having Entry	Boolean	
4	Print All Having Bal	Boolean	
5	Print Reversed Entries	Boolean	
6	Print Unapplied Entries	Boolean	
7	Include Aging Band	Boolean	
8	Period Length	DateFormula	
9	Date Choice	Option	
10	Log Interaction	Boolean	

Table 6175280 CDO E-Mail Job

Field No.	Field Name	Data Type	Length
1	Job No.	Code	10
2	Table No.	Integer	
3	Table Caption	Text	30
4	Type	Option	
5	Table	Option	
6	Enabled	Boolean	
7	Description	Text	50
10	Table Filter	TableFilter	
14	Disable Check for sent erlier	Boolean	
16	E-Mail Template Code	Code	20
20	Last run time	DateTime	
30	Run on Mondays	Boolean	
31	Run on Tuesdays	Boolean	
32	Run on Wednesdays	Boolean	
33	Run on Thursdays	Boolean	
34	Run on Fridays	Boolean	
35	Run on Saturdays	Boolean	
36	Run on Sundays	Boolean	
37	Starting Time	Time	
38	Ending Time	Time	

Table 6175281 CDO Setup

Field No.	Field Name	Data Type	Length
1	Primary Key	Code	10
5	Default Engine	Option	
6	Default Printer Name	Text	250
36	Fixed Cc Recipient(s)	Text	250
37	Fixed Bcc Recipient(s)	Text	250
50	Statement Report ID	Integer	
51	Statement Report Name	Text	30
56	Package Tracking Template	Code	20
60	Document Folder	Text	250
70	Sales Quote E-Mail Action	Option	
71	Sales Order E-Mail Action	Option	
75	Purchase Order E-Mail Action	Option	
80	Html edit command	Text	250
90	Electronic Doc. (Invoice) Type	Option	
91	Electronic Doc. (Invoice) ID	Integer	
94	Electronic Doc.(Cr. Memo) Type	Option	
95	Electronic Doc.(Cr. Memo) ID	Integer	
100	Data Upgrade Version	Code	20
120	E-Mail Log Web Service Server	Text	80
122	E-Mail Log WS Instance Name	Text	80
124	E-Mail Log WS Port (SOAP)	Integer	

Table 6175282 CDO Queue Entry

Field No.	Field Name	Data Type	Length
1	Entry No.	Integer	
2	E-Mail Template Code	Code	20
3	Language Code	Code	10
4	User ID	Code	50
5	Date Time	DateTime	
6	Combine Documents to one PDF	Code	20
7	Record ID	RecordID	
8	Table No.	Integer	
9	Filter	Text	250
10	Filter BLOB	BLOB	
11	Template Variant Value Code	Code	20
12	Report Selection Usage	Integer	
14	Print	Boolean	
15	E-Mail	Boolean	
17	Request Page (XML)	BLOB	
18	Batch No.	Integer	
20	Error	Boolean	
21	Error message	Text	250
22	Error message BLOB	BLOB	
23	Error Date Time	DateTime	

Table 6175283 CDO E-Mail Template Header

Field No.	Field Name	Data Type	Length
1	Code	Code	20
3	Template Variant Field No.	Integer	
4	Dimension Code	Code	20
5	Document Group	Code	20
6	Report-ID	Integer	
7	Report Name	Text	30
8	Engine	Option	
9	Printer Name	Text	250
10	First Table in Report	Integer	
11	First Table in Report Table N.	Text	30
14	E-Mail is Mandatory	Boolean	
16	Template Variant Field Caption	Text	250
18	Test Recipient	Text	80
20	E-Mail Recipients Field	Integer	
21	E-Mail Recipients Field Capt.	Text	250
22	E-Mail Address Field	Text	140
25	From E-Mail	Option	
26	From E-Mail Address	Text	250
27	From E-Mail Name	Text	50
30	SMTP Server	Code	10
31	SMTP E-Mail Template	Option	
32	Log E-Mails	Boolean	
33	Keep E-Mail log for	DateFormula	
36	Fixed Cc Recipient(s)	Text	250
37	Fixed Bcc Recipient(s)	Text	250
40	Merge Fields	Integer	
50	On E-Mail (SMTP)	Option	
52	Open E-Mail with	Option	
60	Document Folder	Text	250
61	Do Not Save to Document Folder	Boolean	
70	Linked to	Option	
71	Linked to Field No.	Integer	
72	Linked to Field Caption	Text	250
76	Combine Documents to one PDF	Integer	
77	Comb.Doc.s.to one PDF Field Ca.	Text	250
80	PDF Sign Certificate	BLOB	
81	PDF Sign File Name	Text	250
83	PDF Sign Password	Text	80
85	PDF Sign Reason	Text	50
86	PDF Sign Location	Text	50

Table 6175284 CDO E-Mail Template Line

Field No.	Field Name	Data Type	Length
1	E-Mail Template Code	Code	20
2	Language Code	Code	10
3	Template Variant Value Code	Code	20
5	Enabled	Boolean	
6	Report-ID	Integer	
7	File Name	Text	250
8	First Table in Report	Integer	
9	Combined Docs. File Name	Text	250
10	Template Variant Field No.	Integer	
12	Dimension Code	Code	20
16	Standard report	Option	
17	Custom Report Layout ID	Integer	
18	Custom Report Layout Code	Code	20
19	Report Layout Description	Text	80
20	Subject Template	BLOB	
21	Outlook E-Mail Template	BLOB	
22	SMTP E-Mail Template	BLOB	
23	HTML E-Mail Template	BLOB	
24	Use Html Template in Outlook	Boolean	
30	Mail Format	Option	
32	Use Outlook Signature	Boolean	
33	Mail Importance	Option	
34	From E-Mail Address	Text	250
35	From E-Mail Name	Text	50
36	Fixed Cc Recipient(s)	Text	250
37	Fixed Bcc Recipient(s)	Text	250
44	Attach Open Documents	Boolean	
45	Attach Open Doc. File Name	Text	250
47	Attach Open Documents Filter	Option	
60	Document Folder	Text	250
61	Do Not Save to Document Folder	Boolean	
70	Log E-Mails	Boolean	
80	Show Request Page	Boolean	
81	Request Page (xml)	BLOB	
100	Background PDF File Name	Text	250
101	Background PDF	BLOB	
103	Merge PDF File Name	Text	250
104	Merge PDF	BLOB	
105	Print uses	Option	

Table 6175285 CDO Send Customer Statement

Field No.	Field Name	Data Type	Length
1	Code	Code	10
10	Send statement if	Option	
11	Period Date Formula	DateFormula	
12	Send statement if Bal.Due D.F.	DateFormula	
14	Do not send if neg. balance	Boolean	
20	Change to manual on Fin.Chr.M.	Boolean	
21	Change to manual on Reminder	Boolean	
26	E-Mail Template Code	Code	20
30	Output	Option	

Table 6175286 CDO Customer Setup

Field No.	Field Name	Data Type	Length
1	Customer No.	Code	20
3	Customer Name	Text	50
10	Automatic statement	Option	
12	Last Automatic Date	Date	
14	Send Statement Code	Code	10
20	First statement start date	Date	
26	Last per.statement start date	Date	
27	Last per.statement end date	Date	
28	Last bal.due statem.start date	Date	
29	Last bal.due statem. end date	Date	
30	Last user statement date	Date	
31	Last user statement user ID	Code	50
40	Template Setup	Integer	
50	On E-Mail (SMTP)	Option	
54	Always send using Outlook	Boolean	

Table 6175287 CDO Statement Journal Line

Field No.	Field Name	Data Type	Length
1	Code	Code	10
2	Line No.	Integer	
8	Type	Option	
10	Customer No.	Code	20
12	Customer Name	Text	50
14	Start Date	Date	
15	End Date	Date	
18	E-Mail Template Code	Code	20
20	Statement PDF	BLOB	
21	PDF Filename	Text	250

Table 6175288 CDO Object Stub

Field No.	Field Name	Data Type	Length
1	Object Type	Option	
2	Object ID	Integer	
11	ID	Integer	
12	ENU Caption	Text	250
14	Exists	Boolean	
16	Insert After ID	Integer	
17	Insert Before ID	Integer	
18	Version	Text	30
20	Create Type	Option	
22	Has New Stub Before	Boolean	
23	Has New Stub After	Boolean	
30	Page Stub Type	Option	
50	Comment	Text	250
60	XML	BLOB	
80	Original Date	Date	
81	Original Time	Time	
82	Original Modified	Boolean	
83	Original Version List	Text	80
86	New Date	Date	
87	New Time	Time	
88	New Modified	Boolean	
89	New Version List	Text	80

Table 6175289 CDO E-Mail Templ.Imp.Worksht.L

Field No.	Field Name	Data Type	Length
1	E-Mail Template Code	Code	20
2	Language Code	Code	10
3	Template Variant Value Code	Code	20
7	Report-ID	Integer	
10	Action	Option	
11	Template Header Exists	Boolean	
12	Template Exists	Boolean	
14	Report Exists	Boolean	
20	New Language Code	Code	10

Table 6175290 CDO E-Mail Recipient Template

Field No.	Field Name	Data Type	Length
1	Table	Option	
3	Document Type	Option	
4	Document Code	Code	20
5	Recipient Type	Option	
6	E-Mail Type	Option	
11	Entry No.	Integer	
20	Do not Attach Open Documents	Boolean	

Table 6175291 CDO Cust.Template Setup

Field No.	Field Name	Data Type	Length
1	Customer No.	Code	20
3	Customer Name	Text	50
6	E-Mail Template Code	Code	20
10	On E-Mail (SMTP)	Option	
14	Always send using Outlook	Boolean	

Table 6175292 CDO Page - Default filter

Field No.	Field Name	Data Type	Length
1	Page No.	Integer	
10	Table No.	Integer	
16	Page Filter	TableFilter	
20	E-Mail Log Filter	Text	30
24	Only Documents With E-Mail	Integer	
28	View (Blob)	BLOB	

Table 6175293 CDO File (dll)

Field No.	Field Name	Data Type	Length
1	Entry No.	Integer	
10	File Name	Text	100
12	Use on Clients	Boolean	
14	Use on Service Tiers	Boolean	
20	File	BLOB	
21	BLOB Size (KB)	Integer	
22	File Version	Text	50
23	Product Version	Text	50

4. Useful functions

Table 6175284 E-Mail Template Line

FindTemplate with ReportID, LanguageCode and RecordRef

FindTemplate(ReportID : Integer; LanguageCode : Code[10]; VAR RecRef : RecordRef) : Boolean

Sample code:

```
PostedSalesInvoice.SETRECFILTER;  
FilterRec.GETTABLE(PostedSalesInvoice)  
IF FindTemplate(Report::"Sales - Invoice", 'ENU',FilterRec) THEN BEGIN  
    // Do something with the template  
  
END;
```

Open Record/PDF In Outlook

OpenOutlookEMail(VAR FilterRecord : RecordRef; VAR VariantRecord : Variant)

Sample code:

```
SalesHeader.SETRECFILTER;  
FilterRecord.GETTABLE(SalesHeader);  
IF EMailTemplateLine.FindTemplate(Report::"Sales Order",SalesHeader"Country Code",FilterRecord)  
THEN BEGIN  
    VarianRecord := SalesHeader;  
    EMailTemplateLine.OpenOutlookEMail(FilterRecord, VariantRecord)  
  
END;
```

Send Record/PDF with SMTP Mail

SendsSMTPMail(VAR FilterRecord : RecordRef;VAR VariantRecord : Variant)

Sample code:

```
SalesHeader.SETRECFILTER;  
FilterRecord.GETTABLE(SalesHeader);  
IF EMailTemplateLine.FindTemplate(Report::"Sales Order",SalesHeader"Country Code",FilterRecord)  
THEN BEGIN  
    VarianRecord := SalesHeader;  
    EMailTemplateLine. SendsSMTPMail (FilterRecord, VariantRecord)  
  
END;
```

Send record/PDF to Queue

QueueMail(VAR FilterRecord : RecordRef; VAR VariantRecord : Variant)

Sample code:

```
EMailTemplate.GET('SAMPLE');
SalesHeader.SETRECFILTER;
FilterRecord.GETTABLE(SalesHeader);
IF EMailTemplateLine.FindTemplate(Report::"Sales Order",SalesHeader"Country Code",FilterRecord)
THEN BEGIN
  VarianRecord := SalesHeader;
  EMailTemplate.QueueMail (FilterRecord, VariantRecord)
END;
```

Recipients Is Empty

RecipientsIsEmpty(VAR FilterRecord : RecordRef) : Boolean

Get Recipients, To, Cc and Bcc

GetRecipients(VAR Recipients : Text; VAR Cc : Text; VAR Bcc : Text; VAR FilterRecord : RecordRef; VAR DoNotAttachOpenDoc : Boolean)

Create Button to open mail with new table and new report.

You have created a new table 50000 and a new report 50000, and now you want to create a new Action to create a PDF and send with a new template you created for report 50000.

Here is the code needed for the new button.

Sample code:

```
IF EMailTemplateLine.FindTemplate(Report::"50000",Table50000."Language Code",FilterRec) THEN BEGIN
  Table50000.SETRECFILTER;
  FilterRecord.GETTABLE(Table50000);
  VarianRecord := Table50000;
  EMailTemplateLine.OpenOutlookEMail(FilterRecord, VariantRecord);
END;
```

Create Button to send mail with SMTP with new table and new report.

You have created a new table 50000 and a new report 50000, and now you want to create a new Action to create a PDF and send with a new template you created for report 50000.

Here is the code needed for the new button.

Sample code:

```
IF EMailTemplateLine.FindTemplate(Report::"50000",Table50000."Language Code",FilterRec) THEN BEGIN
  Table50000.SETRECFILTER;
  FilterRecord.GETTABLE(Table50000);
  VarianRecord := Table50000;
  EMailTemplateLine.SendSMTPMail(FilterRecord, VariantRecord);
END;
```

Create Button to put e-mail in e-mail queue with new table and new report.

You have created a new table 50000 and a new report 50000, and now you want to create a new Action to create a PDF and send with a new template you created for report 50000.

Here is the code needed for the new button.

Sample code:

```
IF EMailTemplateLine.FindTemplate(Report::"50000",Table50000."Language Code") THEN BEGIN
  Table50000.SETRECFILTER;
  FilterRecord.GETTABLE(Table50000);
  VarianRecord := Table50000;
  EMailTemplate.QueueMail(FilterRecord, VariantRecord);
END;
```

Create new Merge Field Finder (Codeunit). (FOB versions only-use event in extensions)

You can program your own codeunit to find a Merge Field value.

The Codeunit can be used on a templates merge field setup with a parameter.

Sample Code (This codeunit is in the zip file under Sample Code):

Global Variables			
Name	Data Type	Subtype	Length
RecRef	RecordRef		

```
OnRun(VAR Rec : Record "E-Mail Codeunit Parameter")
RecRef.OPEN("Table No.");
RecRef.SETPOSITION(Position);
```

```
IF NOT RecRef.FIND THEN
    EXIT;
```

```
CASE Parameter OF
    'Locations':
        ReturnValue := GetOrderLocations(RecRef);
END;
```

```
LOCAL GetOrderLocations(VAR RecRef : RecordRef) ReturnValue : Text[250]
```

Local Variables			
Name	Data Type	Subtype	Length
SalesHeader	Record	Sales Header	
SalesLine	Record	Sales Line	
LocationTemp	Record	Location (Temporary)	

```
IF RecRef.NUMBER <> DATABASE::"Sales Header" THEN
    ERROR('You can not use this function with table %1',RecRef.NUMBER);
RecRef.SETTABLE(SalesHeader);
```

```
//Find Locations
SalesLine.SETRANGE("Document Type",SalesHeader."Document Type");
SalesLine.SETRANGE("Document No.",SalesHeader."No.");
SalesLine.SETFILTER("Location Code",<>%1','');
IF SalesLine.FINDFIRST THEN
    REPEAT
        LocationTemp.Code := SalesLine."Location Code";
    UNTIL SalesLine.NEXT = 0;
```

```
// Set ReturnValue
IF LocationTemp.FINDSET THEN
    REPEAT
        IF ReturnValue = '' THEN
            ReturnValue := LocationTemp.Code
        ELSE
            ReturnValue += ', ' + LocationTemp.Code;
    UNTIL LocationTemp.NEXT = 0;
```

5. Events

All Doc. Output events can be found in Codeunit 6175298 "CDO Events"

OnFindTemplateWithCode

- var EMailTemplateLine: Record "CDO E-Mail Template Line"
- EMailTemplateCode: Code[20]
- LanguageCode: Code[10]
- var RecRef: RecordRef
- var TemplateFound: Boolean

You can subscribe to this event and change the template found.

OnFindTemplateWithReportID

- var EMailTemplateLine: Record "CDO E-Mail Template Line"
- ReportID: Integer
- LanguageCode: Code[10]
- var RecRef: RecordRef
- var TemplateFound: Boolean

You can subscribe to this event and change the template found.

Change From E-Mail Address - OnGetFromEMailAddress

- var EMailTemplateLine: Record "CDO E-Mail Template Line"
- var FromEMailName: Text
- var FromEMailAddress: Text
- var FilterRecord: RecordRef

Change recipients - OnGetRecipients

- var EMailTemplateLine: Record "CDO E-Mail Template Line"
- var Recipients: Text
- var Cc: Text
- var Bcc: Text
- var FilterRecord: RecordRef
- var VariantRecord: Variant
- SMTP: Boolean

You can subscribe to this event and add or change the recipients on the e-mail.

The existing recipients are separated by ;

Sample Code (This codeunit is in the zip file under Sample Code):

Documentation()

```
//You can add or change recipients. Existing recipients are seperated by ;
```

OnRun()


```

LOCAL [EventSubscriber] OnGetRecipients(VAR Sender : Codeunit "Doc. Output
Events";VAR Recipients : Text;VAR Cc : Text;VAR Bcc : Text;VAR FilterRecord :
RecordRef;VAR VariantRecord : Variant)

```

Local Variables

Name	Data Type	Subtype	Length
SalesHeader	Record	Sales Header	
SalesLine	Record	Sales Line	
Cust	Record	Customer	
Item	Record	Item	

```

CASE FilterRecord.NUMBER OF
  DATABASE::"Sales Header":
    BEGIN
      FilterRecord.SETTABLE(SalesHeader);
      IF Cust.GET(SalesHeader."Sell-to Customer No.") THEN
        Recipients := DELCHR(Cust.City,' ',' ') + '@EventSample.com';

      IF SalesHeader."Document Type" = SalesHeader."Document Type"::Order
      THEN BEGIN
        SalesLine.SETRANGE("Document Type",SalesHeader."Document Type");
        SalesLine.SETRANGE("Document No.",SalesHeader."No.");
        SalesLine.SETRANGE(Type,SalesLine.Type::Item);
        SalesLine.SETFILTER("No.", '<>%1', '');
        IF SalesLine.FINDSET THEN
          REPEAT
            IF Item.GET(SalesLine."No.") THEN BEGIN
              Item.CALCFIELDS("Assembly BOM");
              IF Item."Assembly BOM" THEN
                Bcc := 'Assembly@cronuscorp.net';
            END;
          UNTIL SalesLine.NEXT = 0;
        END;
      END;
    END;
  END;
END;

```

Before attachments are added to mail - OnAttachFilesToMail

```

var EMailTemplateLine: Record "CDO E-Mail Template Line"
var AttachFileNames: ARRAY [102] OF Text[1024]
var FilterRecord: RecordRef
var VariantRecord: Variant
SMTP: Boolean

```

You can subscribe to this event and add more attachments to the e-mail.

Do not use array no. 1 and 2 they contain the standard Doc. Output files attached.

```

OnAttachFilesToMail(VAR AttachFileNames : ARRAY [22] OF Text; VAR FilterRecord : RecordRef; VAR
VariantRecord : Variant)

```

Sample Code (This codeunit is in the zip file under Sample Code):

Documentation()

```
//Do not use array no. 1 and 2. They are used by CDO!
```

OnRun()

```

LOCAL [EventSubscriber] OnAttachFilesToMail(VAR Sender : Codeunit "Doc.
Output Events";VAR AttachFileNames : ARRAY [22] OF Text;VAR FilterRecord :
RecordRef;VAR VariantRecord : Variant)

```

Local Variables

Name	Data Type	Subtype	Length
SalesHeader	Record	Sales Header	
SalesLine	Record	Sales Line	
Item	Record	Item	
SalesInvoiceHeader	Record	Sales Invoice Header	
FileManagement	Codeunit	File Management	
ZipFileName	Text		
ServerFileName	Text		
ClientFileName	Text		
AttachFile	Boolean		

```

CASE FilterRecord.NUMBER OF
  DATABASE::"Sales Header":
    BEGIN
      // Adds item pictures to mail on Quote and Order E-Mail
      FilterRecord.SETTABLE(SalesHeader);
      SalesLine.SETRANGE("Document Type",SalesHeader."Document Type");
      SalesLine.SETRANGE("Document No.",SalesHeader."No.");
      SalesLine.SETRANGE(Type,SalesLine.Type::Item);
      SalesLine.SETFILTER("No.", '<>%1', '');
      IF SalesLine.FINDSET THEN BEGIN
        ZipFileName := FileManagement.CreateZipArchiveObject;
        REPEAT
          IF Item.GET(SalesLine."No.") THEN BEGIN
            IF Item.Picture.COUNT > 0 THEN BEGIN
              ServerFileName := ExportItemPicture(Item);
            END
          END
        UNTIL Item.NEXT;
      END
    END

```

```

        FileManagement.AddFileToZipArchive(ServerFileName,STRSUBSTNO('Item
%1.jpg',Item."No."));
        AttachFile := TRUE;
    END;
END;
UNTIL SalesLine.NEXT = 0;
FileManagement.CloseZipArchive;
IF AttachFile THEN BEGIN
    ClientFileName := FileManagement.GetDirectoryName(
FileManagement.ClientTempFileName('') + '\Item Pictures.zip';
    FileManagement.DownloadToFile(ZipFileName,ClientFileName);
    AttachFileNames[3] := ClientFileName;
END;
END;
END;
END;

```

LOCAL ExportItemPicture(Item : Record Item) : Text

Local Variables

Name	Data Type	Subtype	Length
DummyPictureEntity	Record	Picture Entity	
TempNameValueBuffer	Record	Name/Value Buffer	
FileManagement	Codeunit	File Management	
ToFile	Text		
ExportPath	Text		

```

ToFile := DummyPictureEntity.GetDefaultMediaDescription(Item);
ExportPath := TEMPORARYPATH + Item."No." + FORMAT(Item.Picture.MEDIAID);
Item.Picture.EXPORTFILE(ExportPath + '.' +
DummyPictureEntity.GetDefaultExtension);
FileManagement.GetServerDirectoryFilesList(TempNameValueBuffer, TEMPORARYPATH)
;
TempNameValueBuffer.SETFILTER(Name,STRSUBSTNO('%1*', ExportPath));
TempNameValueBuffer.FINDFIRST;
EXIT(TempNameValueBuffer.Name);

```

OnOutlookMailSent

var EMailTemplateLine: Record "CDO E-Mail Template Line"

Recipients: Text

Cc: Text

Bcc: Text

var FilterRecord: RecordRef

You can subscribe to this event and perform code after the mail is sent with Outlook.

OnSMTPMailSent

var EMailTemplateLine: Record "CDO E-Mail Template Line"

var Recipients: Text

var Cc: Text

var Bcc: Text

var FilterRecord: RecordRef

You can subscribe to this event and perform code after the mail is sent with SMTP.

OnBeforePrint

var EMailTemplateLine: Record "CDO E-Mail Template Line"

var ReportID: Integer

var FilterRecord: RecordRef

var ReportParameters: Text

var ShowPrintDialog: Boolean

var ReportSelectionUsage: Integer

var PrintHandled: Boolean

OnMergeFieldFind

```

var EMailTemplateMergeField: Record "CDO E-Mail Template MergeField"
var FilterRecord: RecordRef
FirstMailToContactNo: Code[20]
var Value: Text

```

This event is called for each Merge Field, and can be used to return a value in the Value parameter.

Sample that inserts the Sales Lines as a HTML table in the mail.

```

codeunit 50000 "MergeField Finder"
{
    [EventSubscriber(ObjectType::Codeunit, Codeunit::"CDO Events", 'OnMergeFieldFind', '', true, true)]
    procedure OnMergeFieldFind(var EMailTemplateMergeField: Record "CDO E-
Mail Template MergeField"; var FilterRecord: RecordRef; FirstMailToContactNo: Code[20]; var Value: Text);
    var
        SalesHeader: Record "Sales Header";
        SalesLine: Record "Sales Line";
    begin
        case EMailTemplateMergeField.Number of
            99:
                begin
                    case FilterRecord.Number of
                        database::"Sales Header":
                            begin
                                FilterRecord.SetTable(SalesHeader);
                                SalesLine.setrange("Document No.", SalesHeader."No.");
                                SalesLine.SetRange("Document Type", SalesHeader."Document Type");
                                if SalesLine.FindSet() then begin
                                    Value := '<table style="width:100%" border=1>';
                                    Value += '<tr>';
                                    Value += '    <td>Description</td>';
                                    Value += '    <td>Quantity</td>';
                                    Value += '    <td>Line Amount</td>';
                                    Value += ' </tr>';
                                    repeat
                                        Value += '<tr>';
                                        Value += StrSubstNo('<td>%1</td>', SalesLine.Description);
                                        Value += StrSubstNo('<td>%1</td>', SalesLine.Quantity);
                                        Value += StrSubstNo('<td>%1</td>', SalesLine."Line Amount");
                                        Value += '</tr>';
                                    until SalesLine.Next() = 0;
                                    Value += '</table>';
                                end;
                            end;
                    end;
                end;
        end;
    end;
}

```

6. Pages

Object ID	Name
6175271	CDO E-Mail Template List
6175272	CDO E-Mail Templates
6175273	CDO E-Mail Recipients
6175274	CDO E-Mail Template Attachment
6175275	CDO E-MailTemplateMergeFields
6175276	CDO E-Mail Template Card
6175277	CDO E-Mail Log
6175278	CDO E-Mail Template Groups
6175284	CDO E-Mail/Print Statement
6175285	CDO UnhandledPostedSalesShipt.
6175286	CDO UnhandledPostedSalesInv.
6175287	CDO Unhandled Posted Cr. Memo
6175288	CDO UnhandledPostedReturnRec.
6175289	CDO Unhandled Issued Reminders
6175290	CDO UnhandledIss.FinChrgMemos
6175291	CDO Setup
6175292	CDO About
6175293	CDO SMTP Setup L.
6175294	CDO E-Mail Jobs
6175295	CDO Setup Wizard
6175296	CDO SMTP Setup
6175297	CDO Queue Entry
6175298	CDO Setup Wizard User Setup
6175300	CDO Role Center
6175301	CDO Unhandled
6175302	CDO E-Mail Templates ListPart
6175303	CDO Components
6175304	CDO Statement RequestPageSetup
6175305	CDO Vendor Remittance Advice
6175306	CDO E-Mail Template Lines
6175310	CDO UnhandledPostedServiceShip
6175311	CDO UnhandledPostedServiceInv.
6175312	CDO UnhandledPostedServiceCrM.
6175313	CDO Page Setup
6175314	CDO E-Mail Log FactBox
6175315	CDO NAV Objects
6175316	CDO Fields (With Relation)
6175317	CDO Send Customer Statements
6175318	CDO Customer Setup List
6175319	CDO Field List
6175320	CDO Customer Statement Journal
6175321	CDO E-MailTemplateImportWorksh
6175322	CDO E-Mail Recipient Templates
6175323	CDO Cust.Template Setup
6175324	CDO Customer FactBox
6175325	CDO Customer Setup Card
6175326	CDO Sales Order Actions
6175327	CDO Sales Invoice Actions
6175328	CDO Sales Credit Memo Actions

6175329	CDO Sales Return Order Actions
6175330	CDO E-Mail Template Edit HTML
6175331	CDO E-MailTemplateAttachm.Part
6175332	CDO E-Mail Template Mail Part
6175333	CDO File (dll)
6175334	CDO Service Tiers
6175335	CDO Sales Quote Actions
6175336	CDO Posted Sales Ship. Actions
6175337	CDO Posted Sales Inv. Actions
6175338	CDO Posted Sales Cr.Memo Act.
6175340	CDO Posted Return Receipt Act.
6175341	CDO Issued Reminder Actions
6175342	CDO Issued Fin.Ch.Memo Actions
6175343	CDO E-Mail
6175344	CDO E-Mail Attachments
6175345	CDO Reminder Actions
6175346	CDO Fin. Charge Memo Actions
6175347	CDO Service Quote Actions
6175348	CDO Service Order Actions
6175349	CDO Service Invoice Actions
6175350	CDO Service Cr.Memo Actions
6175351	CDO Posted Serv. Ship. Actions
6175352	CDO Posted Serv. Inv. Actions
6175353	CDO Posted Serv. Cr.M. Actions
6175354	CDO Service Contract Actions
6175355	CDO Purchase Quote Actions
6175356	CDO Purchase Order Actions
6175357	CDO Whse. Sales Order Actions
6175358	CDO Whse. Sales Ret.O. Actions
6175359	CDO Whse. Invent. Pick Actions
6175360	CDO Whse. Shipment Actions
6175361	CDO Whse. Pick/Put-Awy Actions
6175362	CDO Whse. Purch. Order Actions
6175363	CDO Whse. P. Ret.Order Actions
6175364	CDO Whse. Inv.Put-Awy. Actions
6175365	CDO Whse. Receipt Actions
6175366	CDO Job Actions
6175367	CDO Unhandled Sales Quote
6175368	CDO Unhandled Sales Order
6175369	CDO Unhandled Sales Invoice
6175370	CDO Unhandled Purchase Quote
6175371	CDO Unhandled Purchase Order
6175372	CDO Unhandled Purchase Invoice
6175373	CDO Edit HTML E-Mail template
6175374	CDO Merge Field FactBox
6175376	CDO E-Mail Attachments Rec
6175377	CDO Vendor FactBox

7. Reports

Report 6175271 CDO Copy E-Mail Template

Used to copy E-Mail templates, can be copied across companies.

Report 6175272 CDO Create PDF files

Used to create PDF files, when you have used "Document Folder" on the "E-Mail template" or in "Document Output Setup".

Report 6175273 CDO UpdateE-MailLog(Ver. 1.39)

Sets the new fields in "E-Mail Log" "Primary Key Field 1 No.", "Primary Key Field 1 Value", "Primary Key Field 2 No." and "Primary Key Field 2 Value".

Report 6175274 CDO CreateCustomerE-MailRecip.

Creates new e-mail recipient from a field on Customer. Default field 102 E-Mail.

Report 6175275 Create Vendor E-Mail recip.

Creates new e-mail recipient from a field on Vendor. Default field 102 E-Mail.

Report 6175277 CDO Update Customer Setup

Updates **Fejl! Henvisningskilde ikke fundet.** with "Automatic Statement" and "Send statement code"

Report 6175278 CDO CopyE-MailFromDoc.layout

Copies e-mail addresses from Document Layout to E-Mail Recipient in Document Output.

8. Codeunits

6175271 CDO Printer Management

Used to change the Printer to a PDF printer in Codeunit 1.

6175272 CDO Document E-Mail Management

Handling the PDF generating and sending from:

- Sales Shipment Header
- Sales Invoice Header
- Sales Credit Memo Header
- Return Receipt Header
- Issued Reminder Header
- Issued Finance Charge Memo Header
- Service Shipment Header
- Service Invoice Header
- Service Credit Memo Header

6175273 CDO Document-Print Functions

Used in Codeunit 82 "Sales-Post + Print" to print or e-mail documents.

6175276 CDO E-Mail Management

Used to find recipients for:

- Customer / Statements
- Sales Shipment Header
- Sales Invoice Header
- Sales Credit Memo Header
- Return Receipt Header
- Issued Reminder Header
- Issued Finance Charge Memo Header
- Service Shipment Header
- Service Invoice Header
- Service Credit Memo Header

6175277 CDO .Net SMTP Management

Uses the .Net System.Net.Mail.MailMessage to create and send html mails.

6175278 CDO E-MailTemplateImportExport

Used to import or export E-mail templates as xml files.

6175279 CDO Outlook Management

Handling Outlook control.

Uses Outlook and Word.

Used for both editing the e-mail template and generating new mails.

6175280 CDO Print to File

Used to generate PDF's.

It can generate PDF's with Continia PDF or NAV's built in PDF.

6175281 CDO SMTP Mangement

Used to generate a SMTP mail from an E-Mail template.

6175282 CDO Merge Field Value Finder

Codeunit to find Merge Field values with parameter.

6175283 CDO NAV App.ServerE-MailJobMgt

The Codeunit that executes all the e-mail jobs. Typically used with a Job Queue Entry.

6175284 CDO BLOB Management

Handling BLOB to/from file.

6175285 CDO Open Documents

Generating zip file with open documents for Statements, Reminders and Finance Charges.

6175286 CDO Queue Mangement

Handling e-mail queue entries, including handling errors.

6175287 CDO ContiniaPDF Management

Used to generate PDF's with the Continia PDF printer driver.

6175289 CDO Upgrade to 1.36 - Step 1

First step of upgrading from versions before 1.36

6175290 CDO Upgrade to 1.36 - Final

Final step of upgrading from version before 1.36.

6175291 CDO Create Roles

Creating Roles for Document Output.

6175292 CDO Stdandard NAV Actions

Handling Events when sending with standard NAV actions.

Codeunit 6175293 CDO Download and Create AddIns***Codeunit 6175294 CDO Table Field Array Mgt.******Codeunit 6175295 CDO Recipient Mgt.******Codeunit 6175296 CDO E-Mail Template Mangement******Codeunit 6175297 CDO Send Cust. Statement Mgt.******Codeunit 6175298 CDO Events***

All event functions are in this codeunit. These functions are also called in NAV versions without events!

Codeunit 6175299 CDO Functions

Codeunit 6175300 Doc. Output Ver. 2.0 Convert
Converts templates from version 1.x to version 2.x

Codeunit 6175301 CDO Sales-Post and Handle

Codeunit 6175303 CDO E-Mail Handler

Codeunit 6175304 CDO Continia Performance Mgt.

Codeunit 6175305 CDO Issue Document

Codeunit 6175306 CDO Mail Mangement

Codeunit 6175307 CDO Electronic Document Mgt.

Codeunit 6175308 CDO Web Service E-Mail Log

Codeunit 6175310 CDO Subscribers

Codeunit 6175312 CDO Unhandled Sales Pages Mgt.

Codeunit 6175313 CDO UnhandledPurchasePagesMgt.

Codeunit 6175314 CDO UnhandledServicePagesMgt.

Codeunit 6175315 CDO Remittance Mangement

Codeunit 6175317 CDO Core Event Handler

9. Modified standard objects (NAV 2018)

Table 77 Report Selections

Pages

Use "Doc. Output Page Setup" to insert or delete Actions and Fact Boxes on pages.

10. .Net components

Continia.DocumentOutput.PDF.dll

Purpose:

Add background/watermark and merge PDF files.

Used in Codeunit 6175280 Print to File

Methods:

- setPDFBackground (Sets the background/watermark on all pages in a PDF file)
- addPages (adds one PDF file to another PDF file)
- GetNoOfPages (returns the number of pages in a PDF file)
- PrintPDF (Print the PDF file)
- DigitalSign (Signs the PDF with a certificate)
- Embedfile (Embeds a file to the PDF)

GdPicture

The GdPicture components are used by Continia.DocumentOutput.PDF.dll

- GdPicture.NET.14.dll
- GdPicture.NET.14.image.gdimgplug.64.dll
- GdPicture.NET.14.image.gdimgplug.dll
- GdPicture.NET.14.PDF.dll

Continia.DocumentOutput.Outlook.dll (FOB Versions only)

Use Document Output Monitor instead! Uses Web Service to insert E-Mail Log from Outlook

Purpose:

Track if the opened mail in Outlook is sent.

If the mail is sent, the mail is added to the log.

Used in Codeunit 6175279 CDO Outlook Management

Methods:

- SetOutlook
- MailSent

Properties:

- To
- CC
- BCC

Microsoft Outlook (FOB Versions only)

The Outlook files are to make sure NAV can control Outlook.

Used in Codeunit 6175279 Outlook Management

- Microsoft.Office.Interop.Outlook.dll
- Microsoft.Office.Interop.OutlookViewCtl.dll